



C1黑



C2灰蓝



C6绿



C3咖



C5冷茶



C7透白



C4烟灰



QQ8001 52□19-146



C4烟灰



C5冷茶



C7透白



C1黑



C3咖



C6绿



QQ8002 53□19-146



C6绿



C3咖



C1黑



C7透白粉



C5冷茶



C4烟灰



C2灰蓝



QQ8003 52□20-146



C1黑



C5冷茶



C7透白粉



C3咖



ENTLE MONST

C2灰蓝



C4烟灰



QQ8005 52□18-146



C5浅灰



C9透白橙



C2浅咖



C7渐进粉



C1黑



ENTLE MONST

C6烟灰



C8透白荧光绿



C3冷茶



C4咖



QQ8006 53□19-147



QQ8007 52□18-147



C1黑



C7渐进粉



C5透灰



C9透白橙



C4茶棕



ENTLE MONST

C6烟灰



C8透白绿



C2透咖



C3冷茶



QQ8008 50□20-147



C9透白橙



C3冷茶



C8透白荧光绿



C6深灰



C4茶棕



C2咖



C5浅灰



C7渐进粉



QQ8009 51□19-147



C1黑



C7渐进粉



C5浅灰



C9透白橙



C6烟灰



C8透白绿



C2浅咖



C3冷茶



C4咖



QQ8010 51□19-147



C7渐进粉



C2浅咖



C8透白绿



C1黑



C4咖



C6烟灰



C3冷茶



C9透白橙



C5透灰

QQ8011 53□17-147



C2浅咖



C3冷茶



C9透白橙



C7渐进粉



C5浅灰



C8透白绿



C6烟灰



C4咖



C1黑



QQ8012 53□18-147



C8透白绿



C9透白橙



C5浅灰



C3冷茶



C6深灰



ENTLE MONST

C1黑



C2咖



C7渐进粉



QQ8013 51□19-147





C13

C22

C7

C6

QQ7002 52□18-148



C6

C22

C7

C12



C8

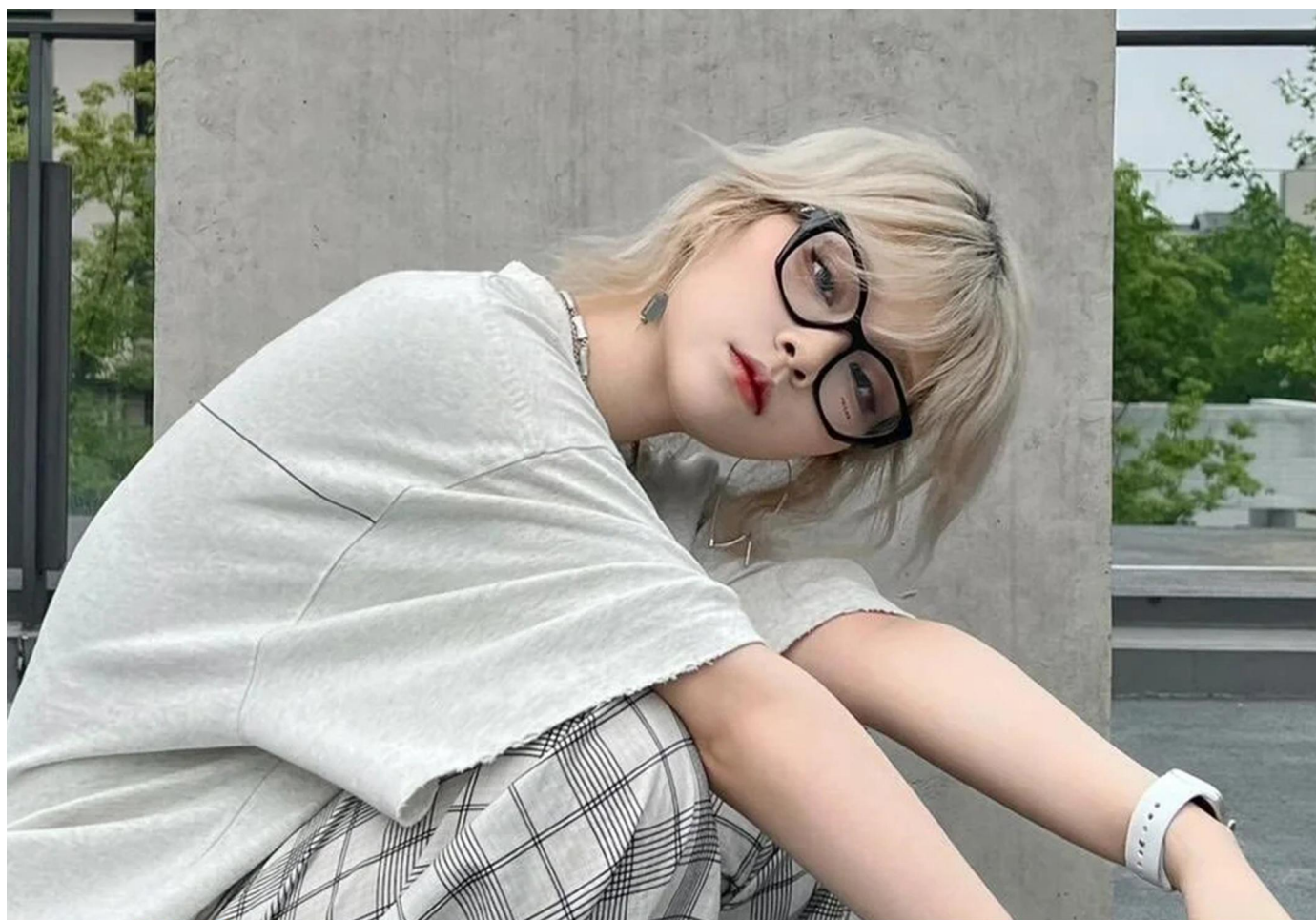
C11

QQ7003 55□18-148



QQ7005 53□17-147





C7豆花



C12冷茶



C6灰



C22透白



C14渐蓝



C11黑



QQ7007 52□18-146





QQ7009 53□16-147



C1



板材插针/ACETATE

C12



C13



C7



C15



C8



QQ7010 53□18-148





板材插针/ACETATE

QQ7012 52□17-142



板材插针/ACETATE

QQ7013 52□17-142







C6

C22

C1

C8



板材插针/ACETATE

C12

QQ7017 54□16-142





C8

C7

C22

C12

C1



板材插针/ACETATE

C9

C14

C6

QQ7019 55□16-149







C1黑

C14上蓝下透

C10上黑下透

C13上紫下咖

C7豆花

ANTI BLUE

弹簧腿/Spring

C8绿

C6灰

QQ7022 53□16-147



C11黑

C13咖

C22透明白

C32奶茶

C7豆花

C12冷茶

C6灰

C8军绿

板材插针/ACETATE

QQ7023 51□16-140

ANTI BLUE



板材插针/ACETATE

C7

C22

C12

C1

C6

C8

C13

ANTI BLUE

QQ7025 52□20-145





C12冷茶



C8绿



C22透白



C11黑



C7豆花



C6灰



QQ7029 53□16-146

ANTI BLUE



C6灰

C17豆花

C7玳瑁

C22透白

C8军绿

QQ7030 55□17-146











C13



C7



C12



C1



C6



C22



C8



QQ7053 52□19-146

ANTI BLUE



C7

C6

C22

C1

C8

C13

QQ7055 56□18-148

ANTI BLUE







C12冷茶

C8绿

C6灰

C7豆花

C22透白

C1黑

C13咖

QQ7059 53□17-148

ANTI BLUE





C1黑



C12咖



C8绿



C6灰



ENTLE MONST

C13冷茶



C7豆花



QQ7063 52□18-144

ANTI BLUE



C7豆花



C14灰



C12咖



C4红



C13紫茶



C1黑

QQ7065 57□18-146

ANTI BLUE





C7豆花



C6灰



C15粉



C5黄



C1黑



C4红



C12咖



QQ7067 53□18-145



C13紫茶



C8绿



C22透白



C12咖



C6灰



ENTLE MONST

C1黑



C7豆花



QQ7068 49□22-145

ANTI BLUE



C12咖



C22透白



C13紫茶



C6灰



C7豆花



C1黑



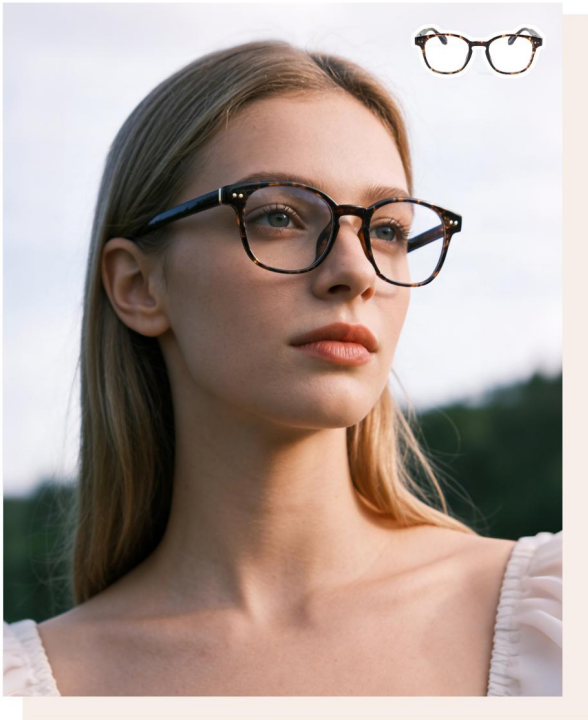
C8绿

QQ7069 46□23-144

|| MODEL QQ7070



49□21-143



INFORMATION

眼镜材质:TR
FRAME MATERIAL: TR

镜腿材质:TR
TR TEMPLE

眼镜重量:19G
FRAME WEIGHT ONLY: 19G

Color. ||



C7豆花



C26冷茶



C22透白



C1黑



C12咖



C13紫茶



C6灰





C1黑

C22透白

C7豆花

C13紫茶

C26绿

C6灰

C12咖

QQ7073 49□21-144

ANTI BLUE



ANTI BLUE

QQ7076 51□48-145



C6灰



C12冷茶



C13紫灰



C26绿



C17豆花



C1黑

QQ7077 49□20-142

ANTI BLUE



C12冷茶

C7豆花

C8绿

C1黑

C22透白

C13灰紫

QQ7078 48□22-143

ANTI BLUE





C8绿

C22透白

C10黑

C13紫茶

C7豆花

C12咖

QQ7080 46□23-144

ANTI BLUE



C11黑



C15咖



C17豆花



C12深咖



ENTLE MONST

C6绿



C4栗红



C8奶茶



QQ7082 50□21-142

ANTI BLUE





MODEL QQ7086



53□21-145



INFORMATION

眼镜材质:TR
TR Material

镜腿材质:板材
Acetate Temple

眼镜重量:21G
Frame Weight Only: 21G

Color.



C17茶豆花



C1黑



C26冷茶



C12咖



C6灰



C8绿



C7深茶豆花









C1黑



C8绿



C13紫茶



C7豆花



C14灰



C22透白



C12咖

QQ7091 54□19-146

ANTI BLUE











ANTI BLUE



C7玳瑁

C1黑

C15奶茶

C12咖

C8绿

ENTLE MONST

C6灰

C26冷茶

C17豆花

QQ7098 50□21-146

ANTI BLUE



C7玳瑁



C26冷茶



C1黑



C6灰



C17黄豆花



C8绿



C22透白



C12咖



QQ7099 48□20-144

ANTI BLUE







C1 黑

C14 灰蓝

C13 紫咖

C7 豆花

C12 咖

C22 透白

QQ7102 49□21-145



C17豆花



C26冷茶



C1黑



C7玳瑁



C6灰



C12咖



C13紫茶

QQ7103 54□20-146

ANTI BLUE





QQ7106 51□20-147



MODEL QQ7109



49□24-148



INFORMATION

眼镜材质:TR
TR Material

镜腿材质:板材
Acetate Temple

眼镜重量:25G
Frame Weight Only: 25G

Color.



C7豆花



C1黑



C22透白



C12咖



C6灰



C8绿



C13紫茶



C6灰



C12深咖



C26绿



C17豆花



C1黑



C4栗红



C7玳瑁

QQ7110 53□ 17-142

ANTI BLUE

|| MODEL QQ7111



55□17-146



INFORMATION

眼镜材质:TR

FRAME MATERIAL: TR

镜腿材质:板材

ACETATE TEMPLE

眼镜重量:22G

FRAME WEIGHT ONLY: 22G

Color. ||



C6灰



C1黑



C8绿



C12咖



C22透白



C4红



C13紫茶



C7豆花

|| MODEL QQ7112



51□20-145



INFORMATION

眼镜材质:TR
TR Frame

镜腿材质:板材
Acetate Temple

眼镜重量:29G
Frame Weight only: 29G

Color. ||



C7豆花



C13紫茶



C1亮黑



C8透绿



C12透咖



C6透灰



C13紫茶



C22透白



C11黑金



QQ7113 47□20-144

ANTI BLUE



C11黑



C8绿



C22透白



C13紫茶



ENTLE MONST

C7豆花



QQ7115 51□22-144





C26绿

C10黑银

C6灰

C13灰紫

C11黑金

QQ7117 50□19-144

ANTI BLUE

|| MODEL QQ7118



55□17-144



INFORMATION

眼镜材质:TR
MATERIAL: TR

镜腿材质:板材
ACETATE TEMPLE

眼镜重量:21G
FRAME WEIGHT ONLY: 21G

Color. ||



C12咖



C26透绿



C7豆花



C2冷茶棕



C1亮黑

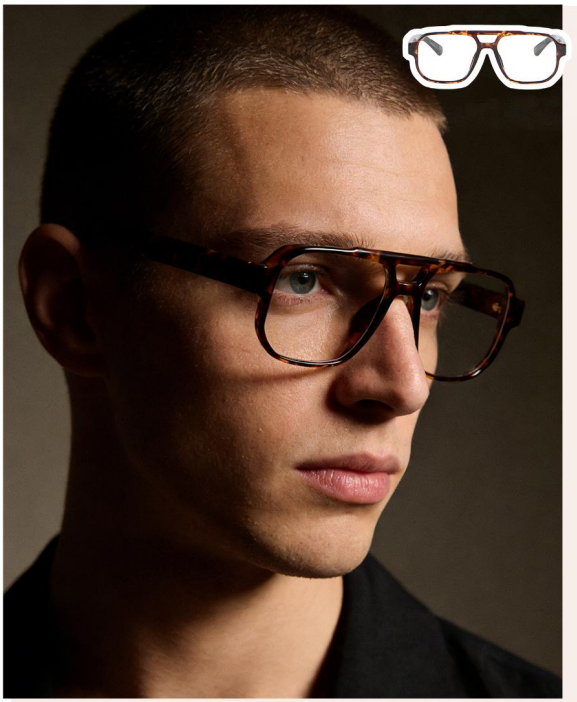


C6透灰

|| MODEL QQ7119



56□18-146



Color. ||



C6灰



C7豆花



C12冷茶



C1黑

INFORMATION

眼镜材质:TR
MATERIAL: TR

镜腿材质:TR
TR TEMPLE

眼镜重量:26G
FRAME WEIGHT ONLY: 26G

|| MODEL QQ7123



54□18-142



INFORMATION

眼镜材质:TR
FRAME MATERIAL: TR

镜腿材质:板材
ACETATE TEMPLE

眼镜重量:20G
FRAME WEIGHT ONLY: 20G

Color.



C4红



C26冷茶



C7豆花



C13紫茶



C12咖



C1黑



C6灰