

↑
TOP

高品质铝镁钛



C1 枪色

C4 黑+银

C5 栗棕色

C2 苹果绿银

C3 裸粉玫

铝镁钛 7701 52-17-145



铝镁钛 7701 52-17-145

↑
TOP

高品质铝镁钛



C1黑色



C4枪+银



C2苹果绿




C3金棕色



C5裸粉玫

铝镁钛 7702 49-19-145



铝镁钛 7702 49-19-145

↑
TOP

高品质铝镁钛

C1黑+枪



C5绛红银



C4木槿紫



C2枪银色



C3金棕色



樱花紫银



铝镁钛 7703 52-19-145



铝镁钛 7703 52-19-145

↑
TOP

高品质铝镁钛

C1黑+枪



C2绛红银



C5枪绿银



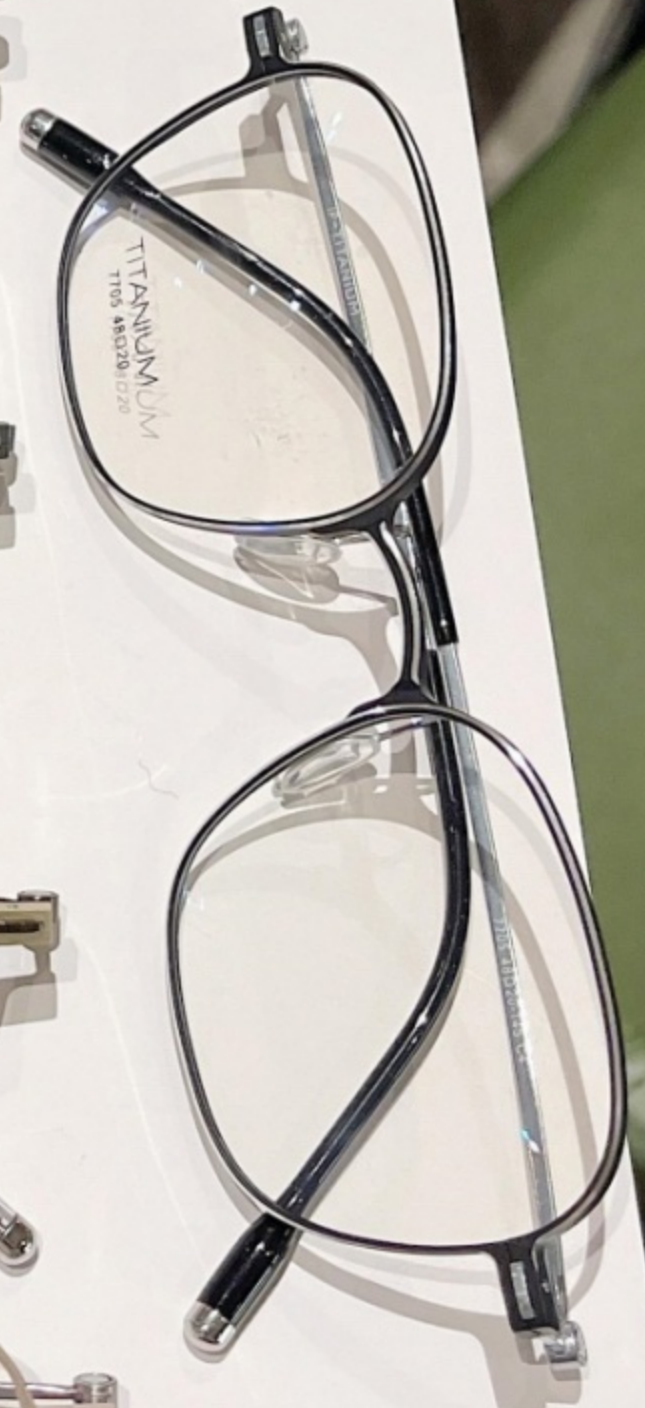
C3金棕色



C6裸粉色



C4黑+银



铝镁钛 7705 48-20-145



铝镁钛 7705 48-20-145

↑
TOP

高品质铝镁钛

C5 绛红银



C4 黑+银



C6 裸粉玫



C3 金棕色



C1 黑+枪



C2 酱紫银



铝镁钛 7706 52-19-145



铝镁钛 7706 52-19-145

↑
TOP

高品质铝镁钛



C1黑+枪



C5枪银



C3墨绿银



C2栗棕色



C4黑+银

铝镁钛 7707 52-18-145



铝镁钛 7707 52-18-145

↑
TOP

高品质铝镁钛



C1黑色



C2枪银



C3黑银



C4裸粉玫



C5墨绿银

铝镁钛 99821 51-19-148



铝镁钛 99821 51-19-148

↑
TOP

高品质铝镁钛



C1黑色



C2枪银



C3黑银



C4裸粉玫



C5浅海蓝

铝镁钛 99823 53-18-150



铝镁钛 99823 53-18-150

↑
TOP

高品质铝镁钛



C1黑色



C2枪蓝



C4黑玫



C3黑银



C5深咖玫

铝镁钛 99822 54-19-150



铝镁钛 99822 54-19-150

↑
TOP

高品质铝镁钛



C1黑色



C2枪银



C3黑银

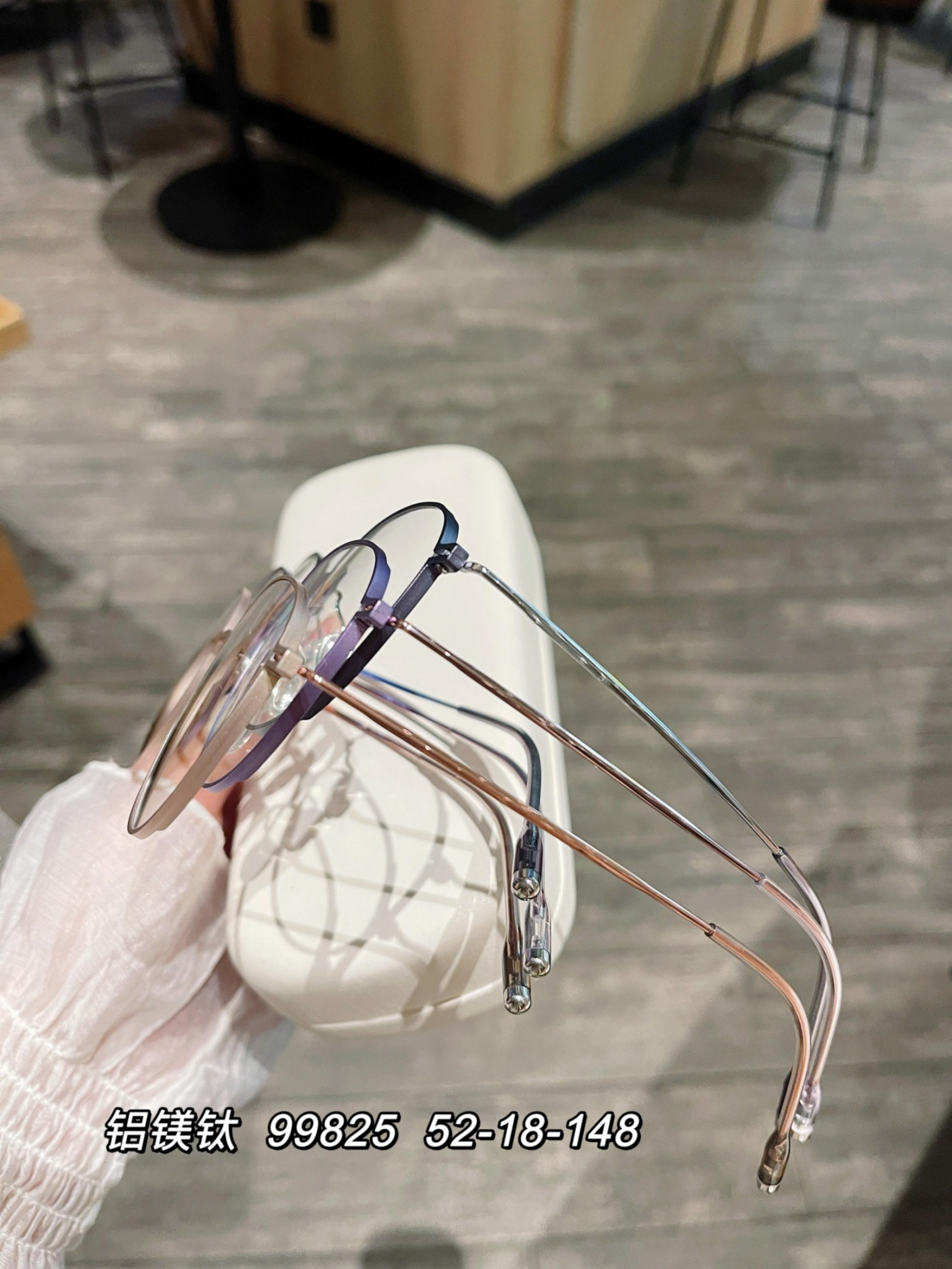


C4藕粉玫



C5电镀紫

铝镁钛 99825 52-18-148

A pair of glasses with a purple and rose gold frame, held by a hand in a white glove against a white background. The glasses have a thin, elegant design with a curved bridge and temples. The temples are primarily rose gold with purple accents at the hinges and tips. The lenses are clear and rectangular. The background is a plain white surface, possibly a wall or a backdrop, with some shadows cast by the glasses and the hand.

铝镁钛 99825 52-18-148

↑
TOP

高品质铝镁钛



C1黑色



C2枪银



C3黑玫



C4藕粉+蓝



C5墨绿银

铝镁钛 99824 53-19-150



铝镁钛 99824 53-19-150

The Art of the
Handwritten
Note

THERE ARE
ALWAYS STORIES THAT END
BEFORE THEY BEGIN

Margaret Shepherd

at
tatisse

BERGGRUEN &

71, RUE DE L'UNIVERSITE PARIS 13
Du Vendredi 27 Février au Samedi 28 Mars

GRADE
AA



C1黑色



C2亮枪色



C3黑玫



C4电镀青



C5抹茶绿

铝镁钛 99811 53-17-148



*The Art of the
Handwritten
Note*

THE ART OF THE
HANDWRITTEN NOTE
BY MARGARET J. HAYES

Margaret Hayes



The Art of the
Handwritten
Note

THERE ARE
ALWAYS STORIES THAT END
BEFORE THEY BEGIN

Margaret Shepherd

BERGGI
tissime



C1黑色



C2亮枪色



C3黑银



C4咖玫



C5电镀青

铝镁钛 99812 53-17-148



The Art of the
Handwritten
Note

THERE ARE
ALWAYS STORIES THAT END
BEFORE THEY BEGIN

Margaret Shepherd

At
Tatisse

BERGGRUE

70 RUE DE ELINENS
Du Vendredi 27 Février au Sa

GRADE
AA



C1黑色

C2枪银

C3黑玫

C4电镀青

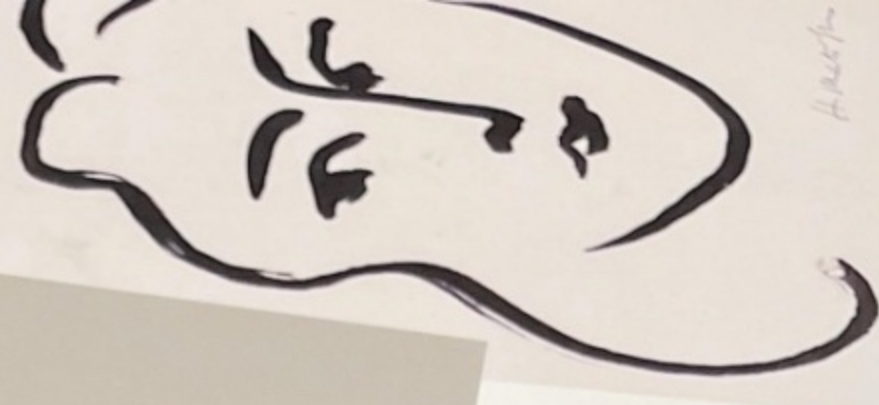
C5抹茶绿

铝镁钛 99813 52-18-148



99813 25□18-148
TITANIUM IP

ATIS



BERGGRUEN & CIE

7, RUE DE L'UNIVERSITE, PARIS VII
Du Vendredi 27 Février au Samedi 28 Mars 1953

*The Art of the
Handwritten
Note*

THERE ARE
ALWAYS STORIES THAT END
BEFORE THEY BEGIN

Margaret Shepherd

atissime

GRADE
AA



C1黑银



C2枪框绿腿



C3黑玫



C4电镀青



C5电镀紫玫

铝镁钛 99814 50-19-148



*The Art of the
Jewelry
Case*

THESE CASES
ARE DESIGNED TO PROTECT
YOUR PRECIOUS TREASURES

Original Design

↑
TOP

高品质铝镁钛



C1黑色



C2枪框绿腿



C3黑玫



C4电镀青



C5抹茶绿

铝镁钛 99815 49-19-148



↑
TOP

高品质铝镁钛



C1黑色



C2枪框蓝腿



C3黑银



C4咖玫



C5枪框绿腿

铝镁钛 99819 52-17-145



↑
TOP

高品质铝镁钛



C1黑色



C2枪银



C3黑金



C4深咖



C5银框蓝腿

铝镁钛 99817 53-20-145



↑
TOP

高品质铝镁钛



C1黑色



C2枪框蓝腿



C4银框绿腿



C3黑金



C5银色

铝镁钛 99820 53-18-145



↑
TOP

高品质铝镁钛



C1黑色



C2枪框绿腿



C3黑银



C4咖金



C5蓝银

铝镁钛 99816 54-18-145



↑
TOP

高品质铝镁钛



C1黑色



C2枪银



C3黑玫



C4黑框绿腿



C5蓝银

铝镁钛 99818 55-18-145



↑
TOP

高品质铝镁钛



C1黑银



C2枪色



C4黑金



C3黑枪

铝镁钛 99801 53-18-152



↑
TOP

高品质铝镁钛



C1黑银色



C2枪灰色



C3黑枪



C4黑金

铝镁钛 99802 55-17-152



↑
TOP

高品质铝镁钛



C3黑枪



C2枪色



C4黑金



C1黑银

铝镁钛 99803 56-16-152



↑
TOP

高品质铝镁钛



C1黑枪



C2枪银



C3黑金



C4蓝框银腿

铝镁钛 99804 56-18-152



↑
TOP

高品质铝镁钛



C1黑枪



C2枪银



C3黑金



C4蓝框银腿

铝镁钛 99805 59-18-152



↑
TOP

高品质铝镁钛



C1黑银



C2枪银



C4黑金



C3黑枪

铝镁钛 99808 57-19-152



↑
TOP

高品质铝镁钛



C1黑银



C2枪银



C3黑金



C4蓝框枪腿

铝镁钛 99809 58-18-152



↑
TOP

高品质铝镁钛



C1黑银



C2枪银



C4咖枪



C3黑枪

铝镁钛 99807 54-17-152



↑
TOP

高品质铝镁钛



C1黑银



C2枪银



C4咖枪



C3黑枪

铝镁钛 99806 52-17-152



↑
TOP

高品质铝镁钛



C1黑银



C2枪银



C4黑金



C3黑枪

铝镁钛 99810 52-18-152

