



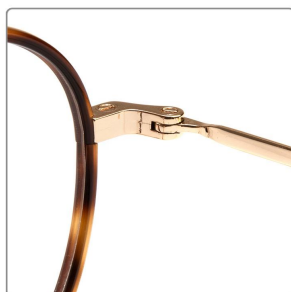
## Windsor Collection

**MODEL-RTM2001**



49□21-140

● Available colours



**C1 S.GUN/DEMI**



**C2 S.SILVER/GREY**



**C3 S.SILVER/BLACK**



**C4 S.GOLD/BROWN**



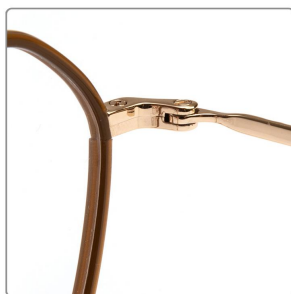
## Windsor Collection

MODEL-RTM2004



47□21-140

### ● Available colours



C1 S.GUN/DEMI



C2 S.GOLD/BLACK



C3 S.SILVER/GREEN



C4 S.GOLD/COFFEE

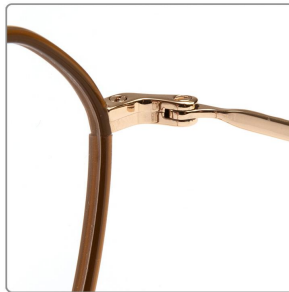


## Windsor Collection MODEL-RTM2005



48□20-140

● Available colours



**C1 S.GUN/DEMI**



**C2 S.GOLD/BLACK**



**C3 S.SILVER/GREY**



**C4 S.GOLD/BROWN**

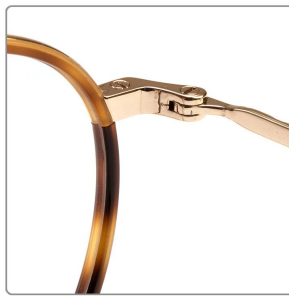


**Windsor Collection**  
**MODEL-RTM2006**



48□21-140

● Available colours



**C1 S.GOLD/DEMI**



**C2 S.GOLD/BROWN**



**C3 S.SILVER/BLACK**



**C4 S.GUN/RED**



## Windsor Collection

MODEL-RTM2007



49□19-140

● Available colours



**C1 S.GOLD/DEMI**



**C2 S.GOLD/GREEN**



**C3 S.SILVER/BLACK**



**C4 S.GUN/RED**





# Windsor Collection

## MODEL-RTM2008



53□17-140

Available colours



**C1 S.GOLD/DEMI**



**C2 S.GOLD/BLACK**



**C3 S.SILVER/BLACK**



**C4 S.GUN/DEMI**



# Windsor Collection

## MODEL-RTM2009



50□21-140

Available colours



**C1 S.GOLD/DEMI**



**C2 S.GOLD/BLACK**



**C3 S.SILVER/BLUE**



**C4 S.GUN/DEMI**