

METAL



▲ S25102 Size : 53-16-140

TAC polarized lens



N0.1 亮黑/金/灰片C1



N0.2 玳瑁/金/茶片C2



N0.3 亮米白/玫金/渐进浅茶C3



N0.4 亮实玫红/银/渐进灰C4



N0.5 粥水灰蓝/玫金/渐进灰蓝C5

METAL



▲ S25103 Size : 53-17-140

TAC polarized lens



N0.1 亮黑/金/灰片C1



N0.2 亮粥水橄榄绿/金/灰片C2



N0.3 亮玳瑁/金/茶片C3



N0.4 实淡粉/银/上紫下粉C4



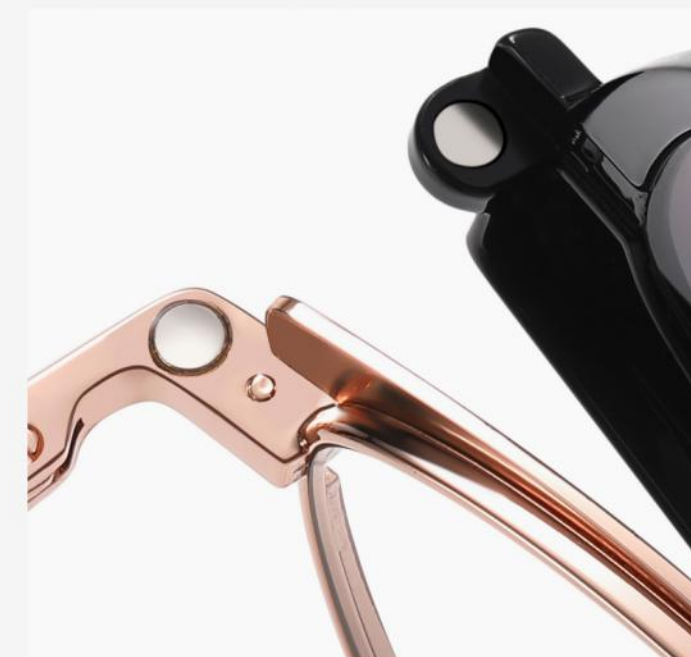
N0.5 亮粥水深蓝/玫金/渐进灰蓝C5

METAL



△ S25104 Size : 53-16-140

TAC polarized lens



N0.1 亮黑/玫金/灰片C1



N0.2 亮透灰玳瑁/银/灰片C2



N0.3 粥水深紫/金/茶片C3



N0.4 玳瑁/玫金/渐进浅茶C4



N0.5 亮实蓝/银/渐进灰蓝C5

METAL



▲ CG8801 Size : 52-19-145

TAC polarized lens



N0.1 亮浅枪灰片C07-P109



N0.2 哑浅金渐进蓝C44-P114



N0.3 亮蓝白水银C12-P08



N0.4 亮银黄片C05-P18



N0.5 哑深枪G15绿片C09-P25

METAL



▲ CG8802 Size : 50-19-145

TAC polarized lens



N0.1 浅枪灰片C07-P109



N0.2 深枪茶片C22-P75



N0.3 金框绿片C06-P96



N0.4 黑框白水银C91-P08



N0.5 银框蓝膜C05-P06

METAL



▲ CG8201 Size : 54-19-145

TAC polarized lens



N0.1 银烤黑灰片C05-P81



N0.2 金烤黑冰蓝C02-P06



N0.3 枪框绿片C49-P96

METAL



▲ CG8202 Size : 55-19-145

TAC polarized lens



NO.1 半哑光黑/灰片C91-P01



NO.2 哑浅咖烤黑/G08绿片C56-P96



NO.3 哑银烤蓝/蓝灰片C209-P196

TR+METAL



▲ CG7801 Size : 50-19-145

TAC polarized lens



N0.1 亮黑/金灰片C01-P109



N0.2 透绿/金茶片C636-P75



N0.3 透酒红/金渐近灰C62-P115



N0.4 透灰/金上灰下粉C637-P125



N0.5 透紫/金渐近紫C638-P126

TR+METAL



▲ CG7802 Size : 53-16-145

TAC polarized lens



N0.1 亮黑/金灰片C01-P109



N0.2 亮透蓝/金渐近茶C639-P127



N0.3 亮透茶/银茶片C642-P75



N0.4 亮透紫/银渐进灰C640-P115



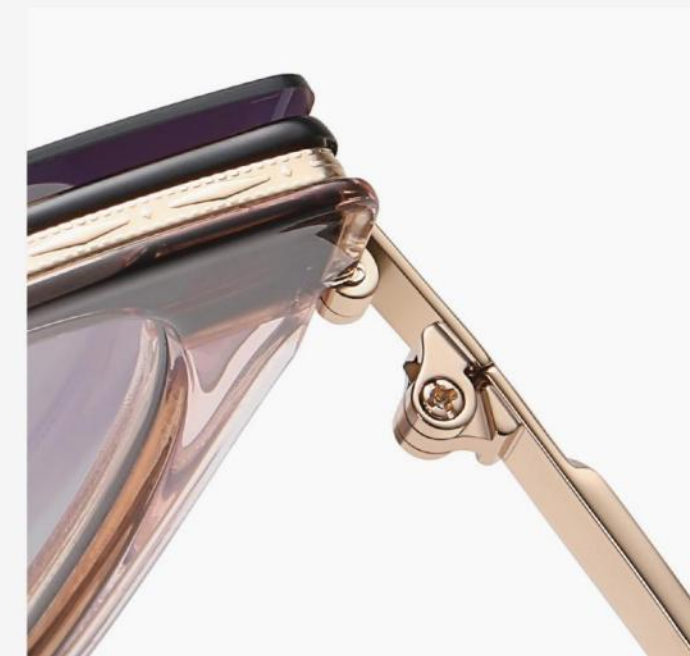
N0.5 亮透绿/金渐进茶C641-P116

TR+METAL



▲ CG3201 Size : 52-19-135

TAC polarized lens



N0.1 上黑下透灰/灰片C650-P01



N0.2 上豆花下透浅茶/渐进茶C651-P116



N0.3 上透灰下透粉/渐进灰C652-P125



N0.4 上透蓝绿下透浅黄/蓝灰C653-P113



N0.5 上透紫下透粉/上紫下粉C654-P105

METAL



▲ CG3202 Size : 52-15-135

TAC polarized lens



N0.1 亮黑金/渐近灰C01-P115



N0.2 灰豆花银/灰片C656-P01



N0.3 亮透绿银/C15绿片C658-P25



N0.4 亮透粉金/上紫下粉C655-P105



N0.5 透浅茶金/渐进茶C657-P116

TR90



△ CG7201 Size : 53-16-145

TAC polarized lens



N0.1 亮黑C01-P109



N0.2 豆花C645-P137



N0.3 透蓝C643-P109



N0.4 透浅灰C644-P109



N0.5 透棕C646-P75

TR90



▲ CG7202 Size : 50-20-145

TAC polarized lens



N0.1 亮黑/渐进灰C01-P115



N0.2 亮透绿/灰片C649-P109



N0.3 亮透蓝/灰片C647-P109



N0.4 亮豆花/绿片C645-P25



N0.5 亮透棕/深蓝片C648-P137

TR90



▲ CG7703 Size : 53-16-145

TAC polarized lens



N0.1 亮黑灰片C01-P97



N0.2 亮透橄榄绿灰片C526-P97



N0.3 亮透灰浅水银C541-P194



N0.4 亮透浅茶渐茶C286-P191



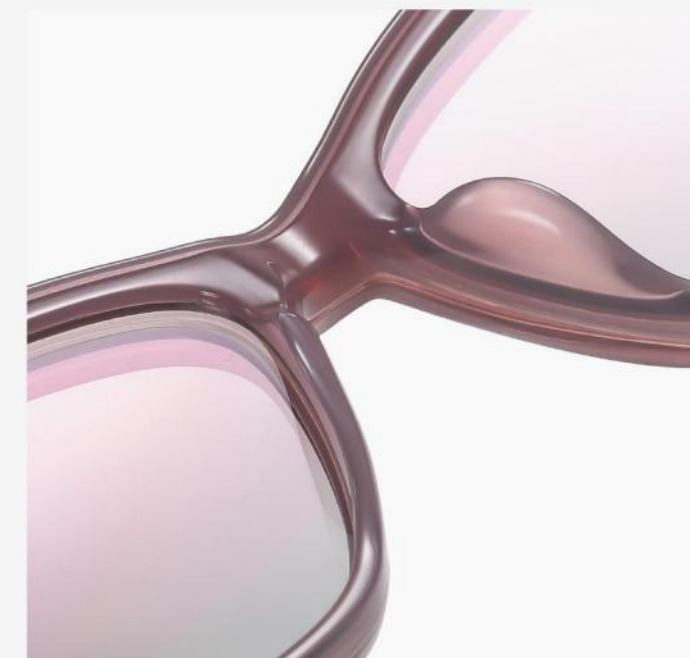
N0.5 亮透明渐进灰C26-P120

TR90



▲ CG7704 Size : 54-15-145

TAC polarized lens



N0.1 亮黑渐进灰C01-P120



N0.2 亮透蓝渐进紫C344-P190



N0.3 亮粥水米色绿片C690-P265



N0.4 亮粥水咖渐进粉C743-P199



N0.5 亮粥水酒红灰片C744-P01

METAL



▲ CG8803 Size : 54-17-148

TAC polarized lens



N0.1 半光哑黑/夜视/灰片 C91-P30
(日夜任意切换)



N0.2 半光哑枪/夜视/灰片 C92-P30
(日夜任意切换)