



MODEL: YS9271

FRAME: ACETATE

SIZE: 50-20-145

FUNCTION: ANTI BULE LIGHT



BLACK
C1 黑色



TRANSPARENT GREY
C2 透灰色



TRANSPARENT
C3 透明色



DEEP TEA
C4 深茶色



BLACKISH GREEN
C5 墨绿色



CHAMPAGNE
C6 香槟色



金属铰链 METAL HINGE



时尚设计 FASHION DESIGN



舒适鼻托 NOSE PAD



MODEL: YS9272

FRAME: METAL

SIZE: 57-17-148

FUNCTION: ANTI BLUE LIGHT



SILVER
C1 银色



ROSE GOLD
C2 玫金色



BLACK
C3 黑色



BLACK SILVER
C4 黑银色



BLACK ROSE GOLD
C5 黑玫金色



GOLD
C6 金色



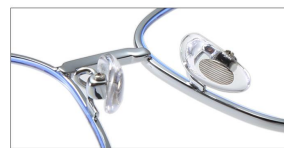
GOLD BLACK
C7 金框黑脚



金属铰链 METAL HINGE



时尚设计 FASHION DESIGN



舒适鼻托 NOSE PAD



MODEL: YS9284

FRAME: METAL+TR

SIZE: 47-18-145

FUNCTION: ANTI BLUE LIGHT



BLACK SILVER
C1 黑银色



BLACK GOLD
C2 黑金色



GREY SILVER
C3 透灰银色



TRANSPARENT SILVER
C4 透明银色



DEEP TEA GOLD
C5 深茶玫金色



BLACKISH GREEN GOLD
C6 墨绿金色



BLACK
C7 黑色



金属铰链 METAL HINGE



时尚设计 FASHION DESIGN



舒适鼻托 NOSE PAD



MODEL: YS9284

FRAME: METAL+TR

SIZE: 47-18-145

FUNCTION: ANTI BLUE LIGHT



BLACK SILVER
C1 黑银色



BLACK GOLD
C2 黑金色



GREY SILVER
C3 透灰银色



TRANSPARENT SILVER
C4 透明银色



DEEP TEA GOLD
C5 深茶玫金色



BLACKISH GREEN GOLD
C6 墨绿金色



BLACK
C7 黑色



金属铰链 METAL HINGE



时尚设计 FASHION DESIGN



舒适鼻托 NOSE PAD



MODEL: YS9256

FRAME: METAL+TR

SIZE: 49-19-140

FUNCTION: ANTI BLUE LIGHT



BLACK SILVER
C1 黑银色



BLACK GOLD
C2 黑金色



GREY SILVER
C3 透灰银色



TRANSPARENT SILVER
C4 透明银色



DEEP TEA GOLD
C5 深茶金色



CHAMPAGNE GOLD
C6 香槟金色



金属铰链 METAL HINGE



时尚设计 FASHION DESIGN



舒适鼻托 NOSE PAD



MODEL: YS9285

FRAME: ACETATE

SIZE: 47-23-145

FUNCTION: ANTI BLUE LIGHT



BLACK
C1 黑色



TRANSPARENT GREY
C2 透灰色



CHAMPAGNE
C3 香槟色



TRANSPARENT
C4 冷茶色



COLD TEA
C5 冷茶色



金属铰链 METAL HINGE



时尚设计 FASHION DESIGN



舒适鼻托 NOSE PAD



MODEL: YS9278

FRAME: METAL+TR

SIZE: 53-19-145

LENS: ANTI BLUE LIGHT



BLACK SILVER
C1 黑银框



TRANSPARENT GREY
C2 透灰银框



TRANSPARENT SILVER
C3 透明银框



COLD TEA ROSE GOLD
C4 冷茶玫金框



BLACKISH GREEN SILVER
C5 墨绿银框



BLACK GOLD
C6 黑金框



BLACK
C7 黑框



平光眼镜 FLAT LIGHT



弹簧铰链 SPRING HINGE



时尚设计 FASHION DESIGN



MODEL: YS9268

FRAME: METAL+TR

SIZE: 53-18-144

FUNCTION: ANTI BULE LIGHT



BLACK SILVER
C1 黑银色



BLACK ROSE GOLD
C2 黑玫金色



TRANSPARENT GREY SILVER
C3 透灰银色



GRADUALLY BLUE ROSE GOLD
C4 渐蓝玫金色



TRANSPARENT TEA ROSE GOLD
C5 透茶玫金色



金属铰链 METAL HINGE



时尚设计 FASHION DESIGN



舒适鼻托 NOSE PAD



MODEL: YS9267

FRAME: TR+ACETATE

SIZE: 48-21-151

FUNCTION: ANTI BLUE LIGHT



BLACK SILVER
C1 黑色



GREY SILVER
C2 灰色



TRANSPARENT SILVER
C3 透明色



BLACK GUN
C4 黑枪色



BLASKISH GREEN DOLD
C5 墨绿金色



COLD TEA SILVER
C6 冷茶银色



金属铰链 METAL HINGE



时尚设计 FASHION DESIGN



舒适鼻托 NOSE PAD



MODEL: YS9264

FRAME: TR+ACETATE

SIZE: 55-20-144

FUNCTION: ANTI BLUE LIGHT



BLACK
C1 黑色



TRANSPARENT GREY
C2 透明灰色



TRANSPARENT
C3 透明色



CHAMPAGNE
C4 香槟色



COLD TEA
C5 冷茶色



TRANSPARENT TEA
C6 透茶色



金属铰链 METAL HINGE



时尚设计 FASHION DESIGN



舒适鼻托 NOSE PAD



MODEL: YS9263

FRAME: TR+METAL

SIZE: 50-22-144

FUNCTION: ANTI BLUE LIGHT



BLACK DOLD
C1 黑金色



BLACK SILVER
C2 黑银色



GREY GUN
C3 灰枪色



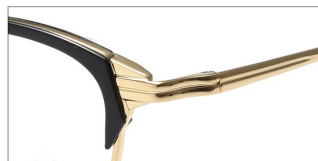
COLD TEA SILVER
C4 冷茶银色



BLUE BRONZE
C5 蓝古铜色



金属铰链 METAL HINGE



时尚设计 FASHION DESIGN



舒适鼻托 NOSE PAD



MODEL: YS9262

FRAME: METAL+TR

SIZE: 49-21-143

LENS: ANTI BLUE LIGHT



BLACK SILVER
C1 黑银框



BLACK METALS
C2 黑金框



TRANSPARENT GOLD
C3 透明金框



TRANSPARENT SILVER
C4 透明银框



TRANSLUCENT SILVER
C5 透灰银框



DEMI GOLD
C6 玳瑁金框



TRANSPARENT DEMI SILVER
C7 透明深玳瑁银框



平光眼镜 FLAT LIGHT



弹簧铰链 SPRING HINGE



时尚设计 FASHION DESIGN



MODEL: YS9261

FRAME: METAL+TR

SIZE: 50-21-145

LENS: ANTI BLUE LIGHT



BLACK ROSE GOLD
C1 黑玫金色



BLACK SILVER
C2 黑银色



TRANSPARENT ROSE GOLD
C3 透明玫金色



TRANSPARENT GREY SILVER
C4 透灰银色



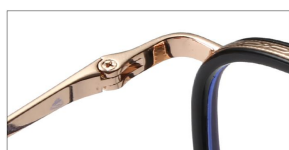
CHAMPAGNE SILVER
C5 香槟银色



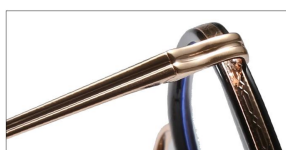
GREY BLUE BLACK
C6 灰蓝黑色



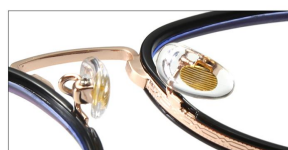
COLD TEA SILVER
C7 冷茶银色



金属铰链 METAL HINGE



时尚设计 FASHION DESIGN



舒适鼻托 NOSE PAD



MODEL: YS9259

FRAME: METAL+TR

SIZE: 51-24-146

FUNCTION: ANTI BULE LIGHT



BLACK SILVER
C1 黑银色



BLACK GOLD
C2 黑金色



GREY TRANSPARENT
C3 灰银色



TRANSPARENT SILVER
C4 透明银色



COLD TEA ROSE GOLD
C5 冷茶玫金色



CHAMPAGNE GOLD
C6 香槟金色



金属铰链 METAL HINGE



时尚设计 FASHION DESIGN



舒适鼻托 NOSE PAD



MODEL: YS9258

FRAME: METAL+TR

SIZE: 52-20-145

FUNCTION: ANTI BULE LIGHT



BLACK SILVER
C1 黑银色



BLACK GOLD
C2 黑金色



GREY TRANSPARENT
C3 灰银色



TRANSPARENT SILVER
C4 透明银色



COLD TEA GOLD
C5 冷茶金色



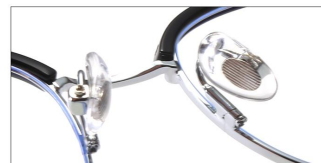
CHAMPAGNE GOLD
C6 香槟金色



金属铰链 METAL HINGE



时尚设计 FASHION DESIGN



舒适鼻托 NOSE PAD



MODEL: YS9257

FRAME: METAL+TR

SIZE: 49-22-144

FUNCTION: ANTI BULE LIGHT



BLACK SILVER
C1 黑银色



BLACK GOLD
C2 黑金色



GREY TRANSPARENT
C3 灰银色



TRANSPARENT SILVER
C4 透明银色



COLD TEA ROSE GOLD
C5 冷茶玫金色



CHAMPAGNE GOLD
C6 香槟金色



金属铰链 METAL HINGE



时尚设计 FASHION DESIGN



舒适鼻托 NOSE PAD



MODEL: YS9255

FRAME: TR+ACETATE

SIZE: 58-18-146

FUNCTION: ANTI BLUE LIGHT



BLACK
C1 黑色



TRANSPARENT GREY
C2 透明灰色



TRANSPARENT
C3 透明色



COLD TEA
C4 冷茶色



TARO PURPLE
C5 香芋紫色



CHAMPAGNE
C6 香槟色



金属铰链 METAL HINGE



时尚设计 FASHION DESIGN



舒适鼻托 NOSE PAD



MODEL: YS9254

FRAME: TR+ACETATE

SIZE: 51-21-150

FUNCTION: ANTI BLUE LIGHT



BLACK
C1 黑色



TRANSPARENT GREY
C2 透明灰色



TRANSPARENT
C3 透明色



BROWN
C4 咖色



COLD TEA
C5 冷茶色



TRANSPARENT BLUE GREY
C6 透明蓝灰色



金属铰链 METAL HINGE



时尚设计 FASHION DESIGN



舒适鼻托 NOSE PAD



MODEL: YS9253

FRAME: METAL

SIZE: 53-18-145

FUNCTION: ANTI BLUE LIGHT



BLACK
C1 黑色



SILVER
C2 银色



GUN
C3 枪色



DOLD
C4 金色



BRONZE
C5 古铜色



金属铰链 METAL HINGE



时尚设计 FASHION DESIGN



舒适鼻托 NOSE PAD



MODEL: YS9252

FRAME: TR+METAL

SIZE: 47-23-145

LENS: ANTI BLUE LIGHT



BLACK GOLD
C1 亮黑/金

BLACK SILVER
C2 亮黑/银



BLACK ROSE GOLD
C3 亮黑/玫瑰金

TRANSPARENT ROSE GOLD
C4 透明/玫瑰金



COFFEE ROSE GOLD
C5 浊水深咖啡/玫瑰金

PINK ROSE GOLD
C6 浊水粉/玫瑰金



GREY GUN
C7 浊水深灰/枪灰



框架眼镜

FRAME GLASSES

金属铰链

METAL HINGE

时尚设计

FASHION DESIGN



MODEL: YS9251

FRAME: TR+METAL

SIZE: 49-21-145

LENS: ANTI BLUE LIGHT



BLACK GOLD
C1 亮黑/金



BLACK SILVER
C2 亮黑/银



BLACK ROSE GOLD
C3 亮黑/玫瑰金



COFFEE ROSE GOLD
C4 浊水深咖啡/玫瑰金



TRANSPARENT SILVER
C5 透明/银



GREY GUN
C6 浊水深灰/枪灰



框架眼镜 FRAME GLASSES



金属铰链 METAL HINGE



时尚设计 FASHION DESIGN



MODEL: YS9250

FRAME: TR+METAL

SIZE: 47-21-145

LENS: ANTI BLUE LIGHT



BLACK GOLD
C1 亮黑/金



BLACK SILVER
C2 亮黑/银



BLACK ROSE GOLD
C3 亮黑/玫瑰金



COFFEE ROSE GOLD
C4 浊水深咖啡/玫瑰金



TRANSPARENT SILVER
C5 透明/银



GREY GUN
C6 浊水深灰/枪灰



框架眼镜 FRAME GLASSES



金属铰链 METAL HINGE



时尚设计 FASHION DESIGN



MODEL: YS9249

FRAME: TR+ACETATE

SIZE: 49-17-145

LENS: ANTI BLUE LIGHT



BLACK GOLD
C1 黑金色



BLACK SILVER
C2 黑银色



TRANSPARENT GREY SILVER
C3 透灰银色



TRANSPARENT SILVER
C4 透明银色



COLD TEA ROSE GOLD
C5 冷茶玫金色



TORTOISESHELL GOLD
C6 玳瑁金色



TRANSPARENT BLUE GUN
C7 透蓝枪色



金属铰链 METAL HINGE



时尚设计 FASHION DESIGN



舒适鼻托 NOSE PAD



MODEL: YS9248

FRAME: TR+ACETATE

SIZE: 50-17-145

LENS: ANTI BLUE LIGHT



BLACK GOLD
C1 黑金色



BLACK SILVER
C2 黑银色



TRANSPARENT GREY SILVER
C3 透灰银色



TRANSPARENT SILVER
C4 透明银色



COLD TEA ROSE GOLD
C5 冷茶玫金色



TORTOISESHELL GOLD
C6 玳瑁金色



CHAMPAGNE GOLD
C7 香槟金色



金属铰链 METAL HINGE



时尚设计 FASHION DESIGN



舒适鼻托 NOSE PAD



MODEL: YS9247

FRAME: TR+METAL

SIZE: 48-23-145

LENS: ANTI BLUE LIGHT



BRIGHT BLACK ROSE GOLD
C1 亮黑玫瑰金



BRIGHT BLACK ROSE GOLD
C1 亮黑玫瑰金



BRIGHT BLACK SILVER
C2 亮黑银



TRANSPARENT ROSE GOLD
C3 透明玫瑰金



TRANSPARENT GREY SILVER
C4 透灰银



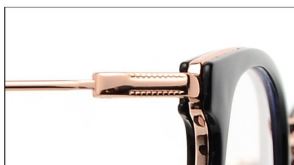
TRANSPARENT BROWN GREY SILVER
C5 透茶灰银



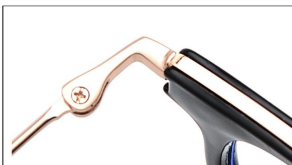
TRANSPARENT BLUE BLACK
C6 透蓝黑



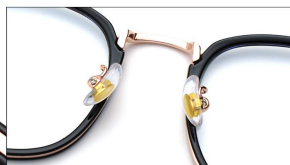
CHAMPAGNE SILVER
C7 香槟银



时尚设计 FASHION DESIGN



金属铰链 METAL HINGE



舒适鼻托 NOSE PAD



MODEL: YS9246

FRAME: TR+METAL

SIZE: 50-21-145

LENS: ANTI BLUE LIGHT



BRIGHT BLACK ROSE GOLD
C1 亮黑玫瑰金



BRIGHT BLACK SILVER
C2 亮黑银



TRANSPARENT ROSE GOLD
C3 透明玫瑰金



TRANSPARENT SILVER
C4 透明银



TRANSPARENT GREY SILVER
C5 透灰银



TRANSPARENT BROWN GREY SILVER
C6 透茶灰银



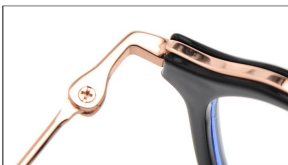
TRANSPARENT BLUE BLACK
C7 透蓝黑



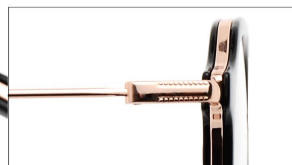
TRANSPARENT PINK SILVER
C8 透粉银



框架眼镜 FRAME GLASSES



金属铰链 METAL HINGE



时尚设计 FASHION DESIGN



MODEL: YS9245

FRAME: TR+METAL

SIZE: 52-20-145

LENS: ANTI BLUE LIGHT



BRIGHT BLACK SILVER
C1 亮黑银



BRIGHT BLACK SILVER
C1 亮黑银



TRANSPARENT GREY SILVER
C2 透灰银



BRIGHT BLACK LIGHT GUN
C3 亮黑浅枪



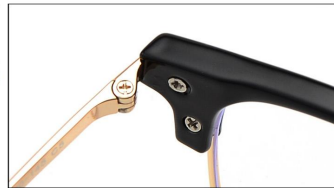
BRIGHT BLACK BLACK
C4 亮黑黑



BRIGHT BLACK GOLD
C5 亮黑金



时尚设计 FASHION DESIGN



金属铰链 METAL HINGE



舒适鼻托 NOSE PAD



MODEL: YS9244/P9244

FRAME: TR+ACETATE

SIZE: 53-18-146

LENS: ANTI BLUE LIGHT



BRIGHT BLACK
C1 亮黑色



TRANSPARENT GREY
C2 透明灰



TRANSPARENT COLOR
C3 透明色



BROWN GREEN
C4 茶绿色



COFFEE
C5 咖啡色



DEEP GREEN
C6 深绿色



BRIGHT BLACK/GREY
C7 亮黑灰片



TRANSPARENT GREY/GRA GREY
C8 透灰渐灰片



BROWN GREEN/GRA BROWN
C9 茶绿渐茶片



BRIGHT BLACK/GRA BLUE
C10 亮黑渐蓝片



太阳眼镜 SUN GLASSES



金属铰链 METAL HINGE



舒适鼻托 NOSE PAD



MODEL: YS9243

FRAME: TR+METAL

SIZE: 51-20-146

LENS: ANTI BLUE LIGHT



BRIGHT BLACK SILVER
C1 亮黑银



BRIGHT BLACK SILVER
C1 亮黑银



GREY BROWN SILVER
C2 灰茶银



DEEP BROWN GOLD
C3 深茶金



TRANSPARENT SILVER
C4 透明银



BRIGHT BLACK GOLD
C5 亮黑金



时尚设计 FASHION DESIGN



金属铰链 METAL HINGE



舒适鼻托 NOSE PAD



MODEL: YS9242

FRAME: TR+ACETATE

SIZE: 49-22-145

LENS: ANTI BLUE LIGHT



BRIGHT BLACK
C1 亮黑色



TRANSPARENT GREY
C2 透明灰



TRANSPARENT COLOR
C3 透明色



TRANSPARENT PINK
C4 透明粉



TRANSPARENT BROWN GREEN
C5 透茶绿



DEEP BROWN
C6 深茶色



框架眼镜 FRAME GLASSES



金属铰链 METAL HINGE



舒适鼻托 NOSE PAD



MODEL: YS9241

FRAME: TR+ACETATE

SIZE: 50-21-148

LENS: ANTI BLUE LIGHT



BRIGHT BLACK
C1 亮黑色



TRANSPARENT GREY
C2 透明灰



TRANSPARENT COLOR
C3 透明色



TRANSPARENT PINK
C4 透明粉



TRANSPARENT BROWN
C5 透明茶



BROWN GREEN
C6 茶绿色



框架眼镜 FRAME GLASSES



金属铰链 METAL HINGE



舒适鼻托 NOSE PAD



MODEL: YS9240

FRAME: TR+ACETATE

SIZE: 51-23-147

LENS: ANTI BLUE LIGHT



BRIGHT BLACK
C1 亮黑色



BRIGHT BLACK DEMI
C2 亮黑玳瑁腿



TRANSPARENT COLOR
C3 透明色



TRANSPARENT GREY
C4 透明灰



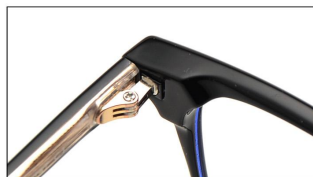
TRANSPARENT BROWN
C5 透明茶



BLACK TRANSPARENT
C6 黑透明



框架眼镜 FRAME GLASSES



金属铰链 METAL HINGE



舒适鼻托 NOSE PAD



MODEL: YS9238

FRAME: TR+METAL

SIZE: 48-24-149

LENS: ANTI BLUE LIGHT



BRIGHT BLACK GOLD
C1 亮黑金



BRIGHT BLACK SILVER
C2 亮黑银



BRIGHT BLACK ROSE GOLD
C3 亮黑玫瑰金



TRANSPARENT ROSE GOLD
C4 透明玫瑰金



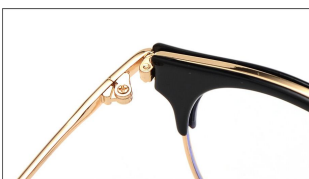
DEEP BROWN ROSE GOLD
C5 深茶玫瑰金



TRANSPARENT PINK ROSE GOLD
C6 透粉玫瑰金



框架眼镜 FRAME GLASSES



金属铰链 METAL HINGE



时尚设计 FASHION DESIGN



MODEL: YS9237

FRAME: TR+METAL

SIZE: 49-21-149

LENS: ANTI BLUE LIGHT



BRIGHT BLACK GOLD
C1 亮黑金



BRIGHT BLACK SILVER
C2 亮黑银



BRIGHT BLACK ROSE GOLD
C3 亮黑玫瑰金



GERY BROWN ROSE GOLD
C4 灰茶玫瑰金



TRANSPARENT LIGHT GUN
C5 透明浅枪



DEEP GREY GUN
C6 深灰枪



框架眼镜 FRAME GLASSES



金属铰链 METAL HINGE



时尚设计 FASHION DESIGN



MODEL: YS9236

FRAME: TR90

SIZE: 52-23-151

LENS: ANTI BLUE LIGHT



C5 亮黑色 BRIGHT BLACK



C5 亮黑色 BRIGHT BLACK



C6 透明灰 TRANSPARENT GREY



C7 透明色 TRANSPARENT COLOR



金属铰链 METAL HINGE



舒适鼻托 NASAL TEAY



时尚设计 FASHION DESIGN



MODEL: YS9234

FRAME: TR+METAL

SIZE: 52-17-142

LENS: ANTI BLUE LIGHT



BRIGHT BLACK SILVER
C1 亮黑银



BRIGHT BLACK SILVER
C1 亮黑银



TRANSPARENT MATTE COFFEE SILVER
C2 透明砂咖银



TRANSPARENT GREY SILVER
C3 透明灰银



TRANSPARENT GOLD
C4 透明金



TRANSPARENT MATTE GREEN SILVER
C5 透明砂绿银



金属铰链 METAL HINGE



舒适鼻托 NASAL TEAY



MODEL: YS9233

FRAME: TR+ACETATE

SIZE: 51-18-142

LENS: ANTI BLUE LIGHT



C1 亮黑色 BRIGHT BLACK



C2 透明茶 TRANSPARENT BROWN



C3 茶透明 BROWN TRANSPARENT



C4 透明灰 TRANSPARENT GREY



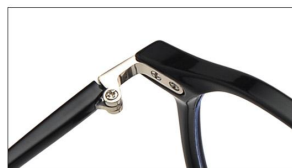
C5 透明色 TRANSPARENT COLOUR



C6 透明绿 TRANSPARENT GREEN



框架眼镜 FRAME GLASSES



金属铰链 METAL HINGE



时尚设计 FASHION DESIGN



MODEL: YS9231

FRAME: TR+METAL

SIZE: 52-19-145

LENS: ANTI BLUE LIGHT



BRIGHT BLACK GOLD
C1 亮黑金



BRIGHT BLACK GOLD
C1 亮黑金



TRANSPARENT GOLD
C2 透明金



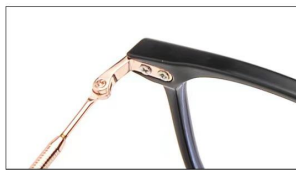
TRANSPARENT GREY SILVER
C5 透明灰银



TRANSPARENT GREEN SILVER
C6 透明绿银



TRANSPARENT BROWN GOLD
C7 透明茶金



金属铰链 METAL HINGE



舒适鼻托 NASAL PAD



时尚设计 FASHION DESIGN



MODEL: YS9230

FRAME: TR+METAL

SIZE: 52-18-145

LENS: ANTI BLUE LIGHT



BRIGHT BLACK GOLD
C1 亮黑金



BRIGHT BLACK GOLD
C1 亮黑金



TRANSPARENT BROWN SILVER
C2 透明茶银



TRANSPARENT GREEN ROSE GOLD
C3 透明绿玫瑰金



TRANSPARENT GREY SILVER
C4 透明灰银



TRANSPARENT GOLD
C5 透明金



金属铰链 METAL HINGE



时尚设计 FASHION DESIGN



MODEL: YS9229

FRAME: TR+METAL

SIZE: 51-18-145

LENS: ANTI BLUE LIGHT



BRIGHT BLACK GOLD
C1 亮黑金



BRIGHT BLACK GOLD
C1 亮黑金



TRANSPARENT BROWN SILVER
C2 透明茶银



TRANSPARENT GREEN ROSE GOLD
C3 透明绿玫瑰金



TRANSPARENT GREY SILVER
C4 透明灰银



TRANSPARENT GOLD
C5 透明金



金属铰链 METAL HINGE



舒适鼻托 NASAL TEAY



MODEL: YS9228

FRAME: TR+METAL

SIZE: 52-20-146

LENS: ANTI BLUE LIGHT



BRIGHT BLACK SILVER
C2 亮黑银



TRANSPARENT SILVER
C3 透明银



TRANSPARENT GREY SILVER
C4 透明灰银



BROWN ROSE GOLD
C21 茶玫瑰金



TRANSPARENT GOLD
C22 透明金



DEMI GOLD
C23 玳瑁金



框架眼镜 FRAME GLASSES



时尚设计 FASHION DESIGN



金属铰链 METAL HINGE



MODEL: P9227

FRAME: TR+ACETATE

SIZE: 53-21-155

LENS: POLARIZED



BRIGHT BLACK/GREY
C1-1 亮黑灰片



BROWN GREEN/GREY
C1-2 茶绿灰片



TRANSPARENT/GREY
C1-3 透明灰片



LIGHT YELLOW/GRA PINK
C1-4 淡黄渐粉



BRIGHT BLACK/WHITE
C8 亮黑白片



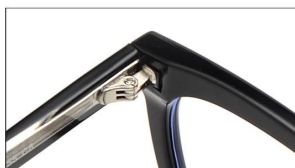
BRIGHT BLACK/WHITE
C8 亮黑白片



TRANSPARENT/WHITE
C11 透明白片



TRANSPARENT GREY/WHITE
C12 透明灰白片



金属铰链 METAL HINGE



舒适鼻托 NASAL PAD



弧形镜腿 MIRROR LEGS



MODEL: YS9226

FRAME: TR+METAL

SIZE: 50-20-145

LENS: ANTI BLUE LIGHT



BRIGHT BLACK GOLD
C1 亮黑金



BRIGHT BLACK SILVER
C2 亮黑银



TRANSPARENT GREY LIGHT GUN
C3 透灰浅枪



JELLY BLUE SILVER
C4 果冻蓝银



JELLY PINK ROSE GOLD
C5 果冻粉玫瑰金



TRANSPARENT SILVER
C6 透明银



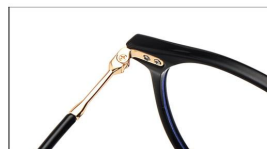
TRANSPARENT GOLD
C7 透明金



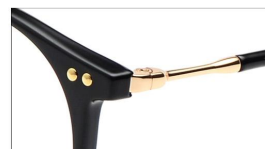
GREY GREEN SILVER
C8 灰绿银



框架眼镜 FRAME GLASSES



金属铰链 METAL HINGE



时尚设计 FASHION DESIGN



MODEL: YS9225

FRAME: TR+METAL

SIZE: 50-18-137

LENS: ANTI BLUE LIGHT



BRIGHT BLACK GOLD
C1 亮黑金



BRIGHT BLACK SILVER
C2 亮黑银



TRANSPARENT SILVER
C3 透明银



TRANSPARENT GREY SILVER
C4 透明灰银



TRANSPARENT GOLD
C5 透明金



MATTE BLACK GUN
C6 砂黑枪



框架眼镜 FRAME GLASSES



金属铰链 METAL HINGE



时尚设计 FASHION DESIGN



MODEL: YS9224

FRAME: TR+ACETATE

SIZE: 50-22-150

LENS: ANTI BLUE LIGHT



BRIGHT BLACK
C8 亮黑色



DEMI RED
C9 玳瑁红



TRANSPARENT COLOR
C11 透明色



TRANSPARENT GREY
C12 透明灰



TRANSPARENT GREEN
C13 透明绿



TRANSPARENT BROWN
C17 透明茶



框架眼镜 FRAME GLASSES



金属铰链 METAL HINGE



时尚设计 FASHION DESIGN



MODEL: YS9223

FRAME: TR+ACETATE

SIZE: 47-24-146

LENS: ANTI BLUE LIGHT



BRIGHT BLACK
C8 亮黑色



BRIGHT BLACK
C8 亮黑色



TRANSPARENT COLOR
C11 透明色



TRANSPARENT GREY
C12 透明灰



TRANSPARENT GREEN
C13 透明绿



TRANSPARENT BROWN
C14 透明茶



金属铰链 METAL HINGE



舒适鼻托 NASAL PAD



时尚设计 FASHION DESIGN



MODEL: YS9222

FRAME: TR+ACETATE

SIZE: 51-23-149

LENS: ANTI BLUE LIGHT



C8 亮黑色 BRIGHT BLACK



C8 亮黑色 BRIGHT BLACK



C11 透明色 TRANSPARENT COLOR



C14 透明茶 TRANSPARENT BROWN



C16 透明灰 TRANSPARENT GREY



C20 透明绿 TRANSPARENT GREEN



金属铰链 METAL HINGE



舒适鼻托 NASAL TEAY



弧形镜腿 ARC TEMPLE



MODEL: YS9007

FRAME: TR+METAL

SIZE: 52-16-145

LENS: ANTI BLUE LIGHT



BRIGHT BLACK GOLD
C1 亮黑金



BRIGHT BLACK SILVER
C2 亮黑银



TRANSPARENT PINK SILVER
C3 透明粉银



TRANSPARENT GREY SILVER
C4 透明灰银



TRANSPARENT GREEN GOLD
C5 透明绿银



TRANSPARENT BROWN ROSE GOLD
C6 透明茶玫瑰金



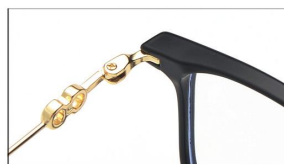
TRANSPARENT BLUE PINK SILVER
C7 透明蓝粉银



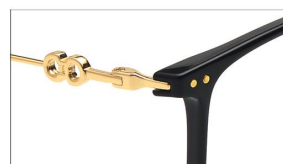
TRANSPARENT ROSE GOLD
C8 透明玫瑰金



框架眼镜 FRAME GLASSES



金属铰链 METAL HINGE



时尚设计 FASHION DESIGN



MODEL: YS9006

FRAME: TR+METAL

SIZE: 52-17-148

LENS: ANTI BLUE LIGHT



BRIGHT BLACK GOLD
C1 亮黑金



BRIGHT BLACK SILVER
C2 亮黑银



TRANSPARENT GREY SILVER
C3 透明灰银



TRANSPARENT BLUE SILVER
C4 透明蓝银



TRANSPARENT BROWN ROSE GOLD
C5 透明茶玫瑰金



TRANSPARENT PINK ROSE GOLD
C6 透明粉玫瑰金



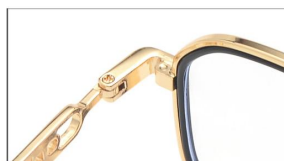
TRANSPARENT ROSE GOLD
C7 透明玫瑰金



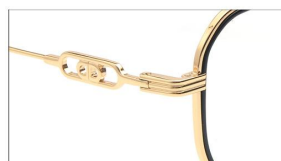
TRANSPARENT GREEN ROSE GOLD
C8 透明绿玫瑰金



框架眼镜 FRAME GLASSES



金属铰链 METAL HINGE



时尚设计 FASHION DESIGN



MODEL: YS9005

FRAME: METAL

SIZE: 48-22-145

LENS: ANTI BLUE LIGHT



SILVER
C1 银色



GOLD
C2 金色



BLACK
C3 黑色



ROSE GOLD
C4 玫瑰金



BLACK SILVER
C5 黑银



BLACK GOLD
C6 黑金



框架眼镜 FRAME GLASSES



金属铰链 METAL HINGE



时尚设计 FASHION DESIGN



MODEL: YS9004

FRAME: METAL

SIZE: 49-20-145

LENS: ANTI BLUE LIGHT



C1 银色 SILVER



C2 金色 GOLD



C3 黑色 BLACK



C4 玫瑰金 ROSE GOLD



C5 黑银 BLACK SILVER



C6 黑金 BLACK GOLD



框架眼镜 FRAME GLASSES



金属铰链 METAL HINGE



时尚设计 FASHION DESIGN



MODEL: YS9002

FRAME: TR+ METAL

SIZE: 51-15-150

LENS: ANTI BLUE LIGHT



BRIGHT BLACK GOLD
C1 亮黑金



BRIGHTBLACK SILVER
C2 亮黑银



TRANSPARENT BLUE SILVER
C3 透明蓝银



RANSPARENT GREY SILVER
C4 透明灰银



PINK ROSE GOLD
C5 粉玫瑰金



MATTE COFFEE GOLD
C6 砂咖啡金



TRANSPARENT BROWN GOLD
C7 透明茶金



GREV GREEN SILVER
C8 灰绿银



TRANSPARENT SILVER
C9 透明银



框架眼镜 FRAME GLASSES



时尚装饰 DECORATION



舒适鼻托 NASAL TEAY



MODEL: YS9001

FRAME: TR+ METAL

SIZE: 49-13-143

LENS: ANTI BLUE LIGHT



BRIGHT BLACK GOLD
C1 亮黑金



TRANSPARENT SILVER
C2 透明银



LIGHT GREY SILVER
C3 浅灰银



BROWN GOLD
C4 茶金



BLUE SILVER
C5 蓝银



BRIGHT BLACK SILVER
C6 亮黑银



PINK GOLD
C7 粉金



DEMI GOLD
C8 玳瑁金



TRANSPARENT GREY SILVER
C9 透明灰银



光学眼镜 OPTICS GLASSES



金属铰链 METAL HINGE



舒适鼻托 NASAL TEAY



MODEL: WA9004

FRAME: METAL+ACETATE

SIZE: 50-19-147

LENS: PC



BLACK GOLD
C1 黑金色



BLACK GOLD
C1 黑金色



BLACK ROSE GOLD
C2 黑玫金色



BLACK SILVER
C3 黑银色



PURPLE GUN
C4 紫枪色



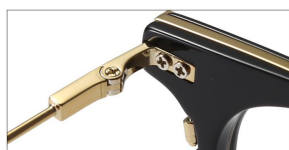
TORTOISESHELL BRONZE
C5 玳瑁古铜色



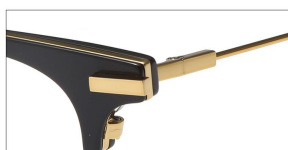
PINK PURPLE
C6 粉紫色



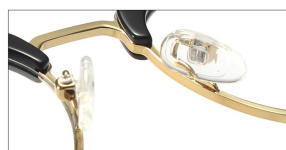
PURPLE ROSE GOLD
C7 紫玫金色



金属铰链 METAL HINGE



时尚设计 FASHION DESIGN



舒适鼻托 NOSE PAD



MODEL: WA9003

FRAME: METAL+ACETATE

SIZE: 49-20-147

LENS: PC



BLACK GOLD
C1 黑金色



BLACK GOLD
C1 黑金色



TEA ROSE GOLD
C2 茶玫金色



TRANSPARENT SILVER
C3 透明银色



BLACK SILVER
C4 黑银色



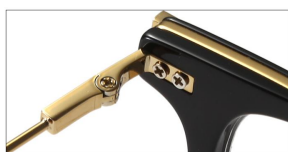
BROWN GUN
C5 咖枪色



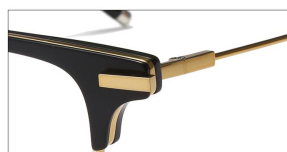
BLUE BLACK
C6 蓝黑色



TORTOISESHELL BRONZE
C7 玳瑁古铜色



金属铰链 METAL HINGE



时尚设计 FASHION DESIGN



舒适鼻托 NOSE PAD



MODEL: WA9002

FRAME: METAL+ACETATE

SIZE: 51-19-147

LENS: PC



BLACK GOLD
C1 黑金色



BLACK GOLD
C1 黑金色



TEA ROSE GOLD
C2 茶玫金色



TRANSPARENT SILVER
C3 透明银色



BLACK SILVER
C4 黑银色



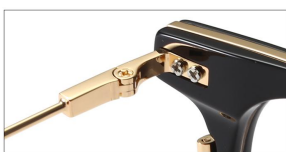
BROWN GUN
C5 咖枪色



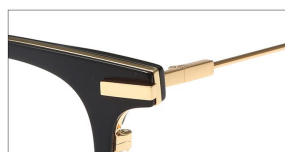
BLUE BLACK
C6 蓝黑色



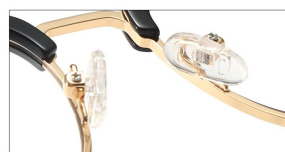
TORTOISESHELL BRONZE
C7 玳瑁古铜色



金属铰链 METAL HINGE



时尚设计 FASHION DESIGN



舒适鼻托 NOSE PAD



MODEL: WA9001

FRAME: METAL+ACETATE

SIZE: 50-19-147

LENS: PC



BLACK GOLD
C1 黑金色



BLACK GOLD
C1 黑金色



TEA ROSE GOLD
C2 茶玫金色



TRANSPARENT SILVER
C3 透明银色



BLACK SILVER
C4 黑银色



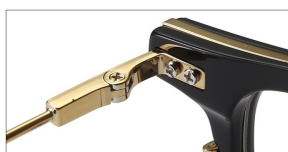
BROWN GUN
C5 咖枪色



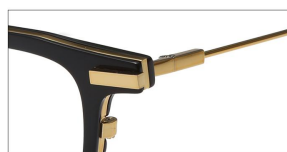
BLUE BLACK
C6 蓝黑色



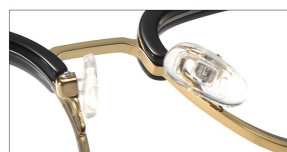
TORTOISESHELL BRONZE
C7 玳瑁古铜色



金属铰链 METAL HINGE



时尚设计 FASHION DESIGN



舒适鼻托 NOSE PAD



MODEL: 20272

FRAME: TR+METAL

SIZE: 51-17-147

LENS: OPTICAL FRAME



C1 透明金 TRANSPARENT GOLD



C2 黑银 BLACK SILVER



C3 玳瑁色 DEMI



C2 黑银 BLACK SILVER



C4 透明茶 TRANSPARENT BROWN



C5 透明灰 TRANSPARENT GREY



金属铰链 METAL HINGE



舒适鼻托 NASAL TEAY



MODEL: TRF20266

FRAME: TR90

SIZE: 48-20-148

LENS: ANTI BLUE LIGHT



BRIGHT BLACK GOLD
C1 亮黑金



MATTE BLACK SILVER
C2 砂黑银



MATTE BLACK SILVER
C2 砂黑银



DEMI GOLD
C3 玳瑁金



TRANSPARENT GLOD
C4 透明金



TRANSPARENT GREY SILVER
C5 透明灰银



TRANSPARENT PINK SILVER
C6 透明粉银



MATTE GREY SILVER
C7 磨砂灰银



ORANGE GLOD
C8 橘红金



TRANSPARENT BROWN SILVER
C9 透明茶银



BRIGHT BLACK SILVER
C10 亮黑银



BEAN FLOWER GLOD
C11 豆花金



金属铰链 METAL HINGE



时尚装饰 DECORATION



舒适鼻托 NASAL TEAY



MODEL: TRF8060

FRAME: TR+TITANIUM

SIZE: 50-17-143

LENS: ANTI BLUE LIGHT



BRIGHT BLACK GOLD
C1 亮黑金



BRIGHT BLACK SILVER
C2 亮黑银



TRANSPARENT GOLD
C3 透明金



TRANSPARENT GREY SILVER
C4 透明灰银



TRANSPARENT GREEN GOLD
C5 透明绿金



TRANSPARENT BROWN GOLD
C6 透明茶金



框架眼镜 FRAME GLASSES



金属铰链 METAL HINGE



时尚设计 FASHION DESIGN



MODEL: TRF8048

FRAME: TR+METAL

SIZE: 50-21-147

LENS: ANTI BLUE LIGHT



BRIGHT BLACK SILVER
C1 亮黑银



BRIGHT BLACK SILVER
C1 亮黑银



TRANSPARENT GREY GREEN GOLD
C2 透明灰绿金



BEAN FLOWER GOLD
C3 豆花金



TRANSPARENT BROWN ROSE GOLD
C4 透茶玫瑰金



TRANSPARENT SILVER
C5 透明银



金属铰链 METAL HINGE



舒适鼻托 NASAL TEAY



MODEL: TRF8036

FRAME: TR+ACETATE

SIZE: 53-19-145

LENS: ANTI BLUE LIGHT



C7 亮黑色 BRIGHT BLACK



C7 亮黑色 BRIGHT BLACK



C8 透明色 TRANSPARENT COLOUR



C9 透明灰 TRANSPARENT GREY



C10 透明茶 TRANSPARENT BROWN



C11 玳瑁色 DEMI



金属铰链 METAL HINGE



舒适鼻托 NASAL TEAY



MODEL: 8034

FRAME: TR+METAL

SIZE: 54-19-144

LENS: ANTI BLUE LIGHT



BRIGHT BLACK GOLD
C1 亮黑金



BRIGHT BLACK GOLD
C1 亮黑金



TRANSPARENT GREY SILVER
C2 透明灰银



TRANSPARENT GREEN
C3 透明银



TRANSPARENT BROWN GOLD
C4 透明茶金



TRANSPARENT GREEN SILVER
C5 透明绿银



金属铰链 METAL HINGE



舒适鼻托 NASAL PAD



MODEL: TRF8026

FRAME: TR+ACETATE

SIZE: 56-20-146

LENS: ANTI BLUE LIGHT



C1 亮黑色 BRIGHT BLACK



C1 亮黑色 BRIGHT BLACK



C2 透明灰 TRANSPARENT GREY



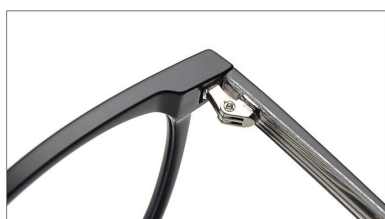
C3 香槟色 CHAMPAGNE



C4 透明色 TRANSPARENT COLOUR



C5 透明绿 TRANSPARENT GREEN



金属铰链 METAL HINGE



舒适鼻托 NASAL PAD



MODEL: TRF8023

FRAME: TR+METAL

SIZE: 59-17-147

LENS: ANTI BLUE LIGHT



BRIGHT BLACK GOLD
C1 亮黑金



BRIGHT BLACK GOLD
C1 亮黑金



TRANSPARENT GOLD
C2 透明金



TRANSPARENT ROSE GOLD
C3 透明玫瑰金



TRANSPARENT GREY SILVER
C4 透明灰银



DEEP BROWN SILVER
C5 深茶银



金属铰链 METAL HINGE



舒适鼻托 NASAL TEAY



MODEL: TRF8022

FRAME: TR+METAL

SIZE: 49-23-146

LENS: ANTI BLUE LIGHT



BRIGHT BLACK SILVER
C1 亮黑银



BRIGHT BLACK SILVER
C1 亮黑银



TRANSPARENT GOLD
C2 透明金



TRANSPARENT BROWN GOLD
C3 透明茶金



TRANSPARENT GREY SILVER
C4 透明灰银



COFFEE SILVER
C5 咖啡银



金属铰链 METAL HINGE



舒适鼻托 NASAL TEAY



MODEL: TRF8018

FRAME: TR+METAL

SIZE: 47-24-153

LENS: ANTI BLUE LIGHT



BRIGHT BLACK GOLD
C1 亮黑金



TRANSPARENT BROWN GOLD
C2 透明茶金



TRANSPARENT GOLD
C3 透明金



TRANSPARENT GREEN SILVER
C4 透明绿银



DEMI GOLD
C5 玳瑁金



TRANSPARENT GREY SILVER
C6 透明灰银



框架眼镜 FRAME GLASSES



金属铰链 METAL HINGE



舒适鼻托 NASAL TEAY



MODEL: K9221

FRAME: TR+ACETATE

SIZE: 50-21-145

LENS: ANTI BLUE LIGHT



BRIGHT BLACK GOLD
C1 亮黑金



BRIGHT BLACK SILVER
C2 亮黑银



TRANSPARENT GOLD
C3 透明金



TRANSPARENT GREY SILVER
C4 透明灰银



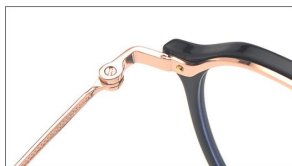
RANSARENT GREEN GOLD
C5 透明绿金



TRANSPARENT BROWN GOLD
C6 透明茶金



框架眼镜 FRAME GLASSES



金属铰链 METAL HINGE



时尚设计 FASHION DESIGN



MODEL: K9220

FRAME: TR+METAL

SIZE: 51-21-151

LENS: ANTI BLUE LIGHT



BRIGHT BLACK SILVER
C2 亮黑银



TRANSPARENT SILVER
C3 透明银



TRANSPARENT GREY SILVER
C4 透明灰银



TRANSPARENT BROWN ROSE GOLD
C5 透明茶玫瑰金



BLACK TRANSPARENT SILVER
C6 黑透明银



GREY TRANSPARENT SILVER
C7 灰透明银



框架眼镜 FRAME GLASSES



金属铰链 METAL HINGE



时尚设计 FASHION DESIGN



MODEL: K9219

FRAME: TR+ACETATE

SIZE: 53-18-150

LENS: ANTI BLUE LIGHT



C8 亮黑色 BRIGHT BLACK



C9 玳瑁色 DEMI



C11 透明色 TRANSPARENT COLOR



C13 透明绿 TRANSPARENT GREEN



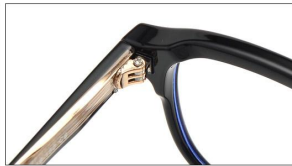
C14 透明茶 TRANSPARENT BROWN



C15 透明灰 TRANSPARENT GREY



框架眼镜 FRAME GLASSES



金属铰链 METAL HINGE



舒适鼻托 NASAL TEAY



MODEL: K9218

FRAME: TR+ACETATE

SIZE: 52-22-146

LENS: ANTI BLUE LIGHT



C8 亮黑色 BRIGHT BLACK



C9 玳瑁色 DEMI



C11 透明色 TRANSPARENT COLOR



C13 透明绿 TRANSPARENT GREEN



C16 透明灰 TRANSPARENT GREY



C17 酒红色 CLARET



金属铰链 METAL HINGE



舒适鼻托 NASAL TEAY



MODEL: K9217

FRAME: TR+ACETATE

SIZE: 51-23-149

LENS: ANTI BLUE LIGHT



C5 亮黑色 BRIGHT BLACK



C6 透明灰 TRANSPARENT GREY



C7 透明色 TRANSPARENT COLOR



C8 透明绿 TRANSPARENT GREEN



框架眼镜 FRAME GLASSES



金属铰链 METAL HINGE



舒适鼻托 NASAL TEAY



MODEL: K9216

FRAME: TR+ACETATE

SIZE: 49-22-147

LENS: ANTI BLUE LIGHT



C1 亮黑色 BRIGHT BLACK



C2 透明灰 TRANSPARENT GREY



C3 透明色 TRANSPARENT COLOR



C4 透明绿 TRANSPARENT GREEN



C5 玳瑁色 DEMI



C6 透明茶 TRANSPARENT BROWN



框架眼镜 FRAME GLASSES



金属铰链 METAL HINGE



舒适鼻托 NASAL TEAY



MODEL: K9215

FRAME: TR+ACETATE

SIZE: 47-23-155

LENS: ANTI BLUE LIGHT



C1 亮黑色 BRIGHT BLACK



C1 亮黑色 BRIGHT BLACK



C2 透明灰 TRANSPARENT GREY



C3 透明茶 TRANSPARENT BROWN



C4 透明色 TRANSPARENT COLOUR



C5 透明绿 TRANSPARENT GREEN



金属铰链 METAL HINGE



舒适鼻托 NASAL TEAY



MODEL: K9213

FRAME: TR+METAL

SIZE: 54-21-145

LENS: ANTI BLUE LIGHT



BRIGHT BLACK GOLD
C1 亮黑金



BRIGHT BLACK GOLD
C1 亮黑金



BRIGHT BLACK SILVER
C2 亮黑银



TRANSPARENT SILVER
C3 透明银



TRANSPARENT GREEN SILVER
C13 透明绿银



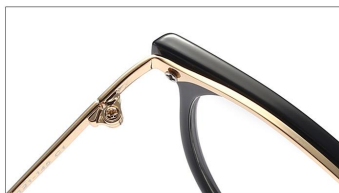
TRANSPARENT GREY SILVER
C16 透明灰银



TRANSPARENT COFFEE SILVER
C20 透明咖银



TRANSPARENT BROWN GOLD
C21 透明茶金



金属铰链 METAL HINGE



舒适鼻托 NASAL TEAY



MODEL: K9212

FRAME: TR+ACETATE

SIZE: 54-20-147

LENS: ANTI BLUE LIGHT



C8 亮黑色 BRIGHT BLACK



C8 亮黑色 BRIGHT BLACK



C11 透明色 TRANSPARENT COLOR



C14 透明粉 TRANSPARENT PINK



C15 香槟色 CHAMPAGNE



C20 透明绿 TRANSPARENT GREEN



金属铰链 METAL HINGE



舒适鼻托 NASAL TEAY



MODEL: K9211

FRAME: TR+ACETATE

SIZE: 49-22-143

LENS: ANTI BLUE LIGHT



C8 亮黑色 BRIGHT BLACK



C8 亮黑色 BRIGHT BLACK



C11 透明色 TRANSPARENT COLOR



C14 香槟色 CHAMPAGNE



C17 透明茶 TRANSPARENT BROWN



C18 透明粉 TRANSPARENT PINK



金属铰链 METAL HINGE



舒适鼻托 NASAL TEAY



MODEL: K9210

FRAME: TR+ACETATE

SIZE: 51-19-147

LENS: ANTI BLUE LIGHT



C8 亮黑色 BRIGHT BLACK



C8 亮黑色 BRIGHT BLACK



C9 玳瑁色 DEMI



C11 透明色 TRANSPARENT COLOUR



C16 透明灰 TRANSPARENT GREY



C19 黑框玳瑁腿 BLACK DEMI



金属铰链 METAL HINGE



舒适鼻托 NASAL TRAY



MODEL: K9209

FRAME: TR+ACETATE

SIZE: 55-17-147

LENS: ANTI BLUE LIGHT



C8 亮黑色 BRIGHT BLACK



C11 透明色 TRANSPARENT COLOR



C13 透明绿 TRANSPARENT GREEN



C14 透明茶 TRANSPARENT BROWN



C16 透明灰 TRANSPARENT GREY



C18 透明蓝 TRANSPARENT BLUE



框架眼镜 FRAME GLASSES



金属铰链 METAL HINGE



舒适鼻托 NASAL TEAY



MODEL: K9208

FRAME: TR+ACETATE

SIZE: 49-22-147

LENS: ANTI BLUE LIGHT



C6 黑透明 BLACK TRANSPARENT



C8 亮黑色 BRIGHT BLACK



C9 玳瑁色 DEMI



C11 透明色 TRANSPARENT COLOR



C13 透明绿 TRANSPARENT GREEN



C16 透明灰 TRANSPARENT GREY



框架眼镜 FRAME GLASSES



金属铰链 METAL HINGE



舒适鼻托 NASAL TEAY



MODEL: K9207

FRAME: TR+ACETATE

SIZE: 56-16-148

LENS: ANTI BLUE LIGHT



C6 黑透明 BLACK TRANSPARENT



C8 亮黑色 BRIGHT BLACK



C11 透明色 TRANSPARENT COLOR



C13 透明绿 TRANSPARENT GREEN



C14 透明茶 TRANSPARENT BROWN



C16 透明灰 TRANSPARENT GREY



框架眼镜 FRAME GLASSES



金属铰链 METAL HINGE



舒适鼻托 NASAL TEAY



MODEL: K9206

FRAME: TR+ACETATE

SIZE: 55-19-153

LENS: ANTI BLUE LIGHT



C8 亮黑色 BRIGHT BLACK



C8 亮黑色 BRIGHT BLACK



C11 透明色 TRANSPARENT COLOR



C14 透明茶 TRANSPARENT BROWN



C15 透明灰 TRANSPARENT GREY



C16 透明绿 TRANSPARENT GREEN



金属铰链 METAL HINGE



舒适鼻托 NASAL TEAY



MODEL: K9205

FRAME: TR+ACETATE

SIZE: 49-25-146

LENS: ANTI BLUE LIGHT



C8 亮黑色 BRLGHT BLACK



C9 玳瑁色 DEMI



C10 透明粉 TRANSPAREN PINK



C11 透明色 TRANSPARENT COLOR



C12 透明灰 TRANSPARENT GREY



C13 透明绿 TRANSPARENT GREEN



框架眼镜 FRAME GLASSES



金属铰链 METAL HINGE



舒适鼻托 NASAL TEAY



MODEL: K9204

FRAME: TR+METAL

SIZE: 52-20-151

LENS: ANTI BLUE LIGHT



BRIGHT BLACK GOLD
C1 亮黑金



BRIGHT BLACK GOLD
C1 亮黑金



BRIGHT BLACK SILVER
C2 亮黑银



TRANSPARENT SILVER
C3 透明银



TRANSPARENT GREY SILVER
C4 透明灰银



TRANSPARENT BROWN GOLD
C5 透明茶金



金属铰链 METAL HINGE



舒适鼻托 NASAL TEAY



MODEL: K9203

FRAME: TR+METAL

SIZE: 50-23-145

LENS: ANTI BLUE LIGHT



BRIGHT BLACK GOLD
C1 亮黑金



BRIGHT BLACK GOLD
C1 亮黑金



BRIGHT BLACK SILVER
C2 亮黑银



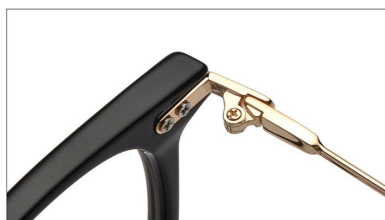
TRANSPARENT SILVER
C3 透明银



TRANSPARENT GREY SILVER
C4 透明灰银



TRANSPARENT BROWN GOLD
C5 透明茶金



金属铰链 METAL HINGE



舒适鼻托 NASAL TEAY



MODEL: K9202

FRAME: TR+METAL

SIZE: 47-24-148

LENS: ANTI BLUE LIGHT



BRIGHT BLACK GOLD
C1 亮黑金



BRIGHT BLACK GOLD
C1 亮黑金



BRIGHT BLACK SILVER
C2 亮黑银



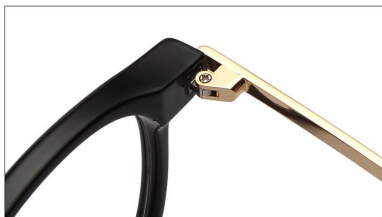
TRANSPARENT SILVER
C3 透明银



TRANSPARENT GREY SILVER
C4 透明灰银



TRANSPARENT BROWN GOLD
C5 透明茶金



金属铰链 METAL HINGE



舒适鼻托 NASAL TEAY



MODEL: K9201

FRAME: TR+METAL

SIZE: 54-16-147

LENS: ANTI BLUE LIGHT



BRIGHT BLACK SILVER
C2 亮黑银



BRIGHT BLACK SILVER
C2 亮黑银



TRANSPARENT SILVER
C3 透明银



TRANSPARENT GREY SILVER
C4 透明灰银



TRANSPARENT GRA BLACK SILVER
C6 透明渐黑银



TRANSPARENT GRA GREY SILVER
C7 透明渐灰银



金属铰链 METAL HINGE



时尚设计 FASHION DESIGN



MODEL: IP9801

FRAME: TR+TITANIUM

SIZE: 50-18-145

LENS: PC



BRIGHT BLACK SILVER
C1 亮黑银



BRIGHT BLACK GOLD
C2 亮黑金



TRANSPARENT GREY SILVER
C3 透灰银



TRANSPARENT SILVER
C4 透明银



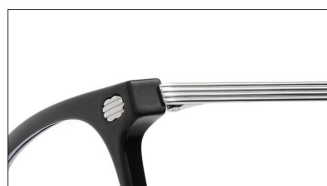
DEEP BROWN SILVER
C5 深茶银



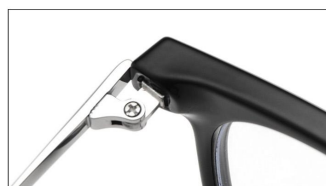
BROWN GREEN ROSE GOLD
C6 茶绿玫瑰金



框架眼镜 FRAME GLASSES



时尚设计 FASHION DESIGN



金属铰链 METAL HINGE



MODEL: F20268

FRAME: TR+METAL

SIZE: 51-24-148

LENS: ANTI BLUE LIGHT



C1 亮黑金 BRIGHT BLACK GOLD



C1 亮黑金 BRIGHT BLACK GOLD



C3 橙黄金 ORANGE YELLOW GOLD



C2 玳瑁色 DEMI



C4 亮黑银 RIGHT BLACK SILVER



C5 灰茶金 BROWN GREY GOLD



金属铰链 METAL HINGE



舒适鼻托 NASAL TEAY



MODEL: D58204

FRAME: TR+METAL

SIZE: 51-22-147

LENS: ANTI BLUE LIGHT



BRIGHT BLACK GOLD
C1 亮黑金



DEMI GOLD
C2 玳瑁金



TRANSPARENT GREY SILVER
C3 透明灰银



TRANSPARENT CHAMPAGNE GOLD
C4 透明香槟金



TRANSPARENT GREY BROWN SILVER
C5 透明灰茶银



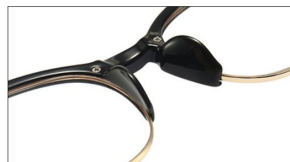
TRANSPARENT SILVER
C6 透明银



框架眼镜 FRAME GLASSES



金属铰链 METAL HINGE



舒适鼻托 NASAL TEAY



MODEL: D58203

FRAME: TR+METAL

SIZE: 49-24-147

LENS: ANTI BLUE LIGHT



BRIGHT BLACK GOLD
C1 亮黑金



DEMI GOLD
C2 玳瑁金



TRANSPARENT GREY SILVER
C3 透明灰银



BEAN FLOWER GOLD
C4 豆花金



TRANSPARENT GOLD
C5 透明金



TRANSPARENT SILVER
C6 透明银



框架眼镜 FRAME GLASSES



金属铰链 METAL HINGE



舒适鼻托 NASAL TEAY



MODEL: D56202

FRAME: TR+METAL

SIZE: 51-24-148

LENS: ANTI BLUE LIGHT



BRIGHT BLACK GOLD
C1 亮黑金



DEMI GOLD
C2 玳瑁金



BROWN SILVER
C3 茶银



BEAN FLOWER GOLD
C4 豆花金



TRANSPARENT GOLD
C5 透明金



MATTE GREY SILVER
C6 磨砂灰银



框架眼镜 FRAME GLASSES



金属铰链 METAL HINGE



舒适鼻托 NASAL TEAY



MODEL: ZS52066

FRAME: METAL

SIZE: 50-21-147

LENS: ANTI BLUE LIGHT



C1 银色 SILVER



C2 金色 GOLD



C3 黑色 BLACK



C4 玫瑰金 ROSE GOLD



C5 黑银 BLACK SILVER



C6 黑金 BLACK GOLD



框架眼镜 FRAME GLASSES



时尚装饰 DECORATE



MODEL: ZS52065

FRAME: METAL

SIZE: 57-15-147

LENS: ANTI BLUE LIGHT



C1 银色 SILVER



C2 金色 GOLD



C3 黑色 BLACK



C4 玫瑰金 ROSE GOLD



C5 黑银 BLACK SILVER



C6 黑金 BLACK GOLD



框架眼镜 FRAME GLASSES



金属铰链 METAL HINGE



时尚装饰 DECORATE