

# MODEL 2A69



50mm | 21mm | 140mm



镜框材质：板材 镜腿材质：钛合金 镜片材质：AC  
Frame Material: Acetate Temple Material: Titanium Alloy Lens Material: AC



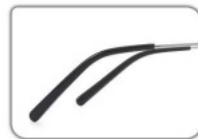
C1  
镜框 (Frame): 亮黑 / Black  
镜腿 (Temple): 亮黑 / Black



C2  
镜框 (Frame): 透灰框 / Transparent Grey  
镜腿 (Temple): 透灰色 / Transparent Grey



C3  
镜框 (Frame): 深蓝框 / Deep Blue  
镜腿 (Temple): 深蓝色 / Deep Blue



# MODEL 2A68



51mm | 18mm | 143mm



镜框材质： 板材 镜腿材质： 板材 镜片材质： AC  
Frame Material: Acetate Temple Material: Acetate Lens Material: AC



C1  
镜框 (Frame): 亮黑 /Black  
镜腿 (Temple): 亮黑 /Black



C2  
镜框 (Frame): 透茶 /Transparent Tea  
镜腿 (Temple): 透茶 /Transparent Tea



C3  
镜框 (Frame): 透明浅茶 /Transparent Light Tea  
镜腿 (Temple): 透明浅茶 /Transparent Light Tea



C4  
镜框 (Frame): 透明灰茶 /Transparent Grey Tea  
镜腿 (Temple): 透灰 /Transparent Grey



# MODEL 2A67



55mm | 17mm | 143mm



镜框材质：板材 镜腿材质：板材 镜片材质：AC  
Frame Material: Acetate Temple Material: Acetate Lens Material: AC



C1  
镜框 (Frame): 亮黑 /Black  
镜腿 (Temple): 亮黑色 /Black



C2  
镜框 (Frame): 透茶框 /Transparent Tea  
镜腿 (Temple): 透茶色 /Transparent Tea



C3  
镜框 (Frame): 透灰框 /Transparent Grey  
镜腿 (Temple): 透灰色 /Transparent Grey



# MODEL 2A66



55mm | 17mm | 145mm



镜框材质：板材 镜腿材质：板材 镜片材质：AC  
Frame Material: Acetate Temple Material: Acetate Lens Material: AC



C1  
镜框 (Frame): 亮黑/Black  
镜腿 (Temple): 亮黑/Black



C2  
镜框 (Frame): 玳瑁/Tortoiseshell  
镜腿 (Temple): 玳瑁/Tortoiseshell



# MODEL 2A65



45mm | 21mm | 149mm



镜框材质：板材 镜腿材质：板材 镜片材质：AC  
Frame Material: Acetate Temple Material: Acetate Lens Material: AC



C1  
镜框 (Frame): 亮黑 / Black  
镜腿 (Temple): 亮黑 / Black

C2  
镜框 (Frame): 透茶 / Transparent Tea  
镜腿 (Temple): 透茶 / Transparent Tea



C3  
镜框 (Frame): 透灰 / Transparent Grey  
镜腿 (Temple): 透灰 / Transparent Grey



# MODEL 2A63



46mm | 19mm | 147mm



镜框材质：板材 镜腿材质：板材 镜片材质：AC  
Frame Material: Acetate Temple Material: Acetate Lens Material: AC



C1  
镜框 (Frame): 亮黑/Black  
镜腿 (Temple): 亮黑/Black



C2  
镜框 (Frame): 透茶/Transparent Tea  
镜腿 (Temple): 透茶/Transparent Tea



C3  
镜框 (Frame): 透灰/Transparent Grey  
镜腿 (Temple): 透灰/Transparent Grey



C4  
镜框 (Frame): 透橘/Transparent Orange  
镜腿 (Temple): 透橘/Transparent Orange



C5  
镜框 (Frame): 亮黑/Black  
镜腿 (Temple): 亮黑内透明/Black with Inner Transparent



# MODEL 2A62



48mm 25mm 148mm



镜框材质：板材 镜腿材质：板材 镜片材质：AC  
Frame Material: Acetate Temple Material: Acetate Lens Material: AC



C1  
镜框 (Frame): 亮黑 / Black  
镜腿 (Temple): 亮黑 / Black



C2  
镜框 (Frame): 玳瑁 / Tortoiseshell  
镜腿 (Temple): 玳瑁 / Tortoiseshell



C3  
镜框 (Frame): 透灰 / Transparent Grey  
镜腿 (Temple): 透灰 / Transparent Grey



C4  
镜框 (Frame): 透茶 / Transparent Tea  
镜腿 (Temple): 透茶 / Transparent Tea



C5  
镜框 (Frame): 透橘 / Transparent Orange  
镜腿 (Temple): 透橘 / Transparent Orange



C6  
镜框 (Frame): 亮黑 / Black  
镜腿 (Temple): 内透明黑 / Clear Inner with Black



# MODEL 2A61



54mm | 17mm | 145mm



镜框材质：板材 镜腿材质：板材 镜片材质：AC  
Frame Material: Acetate Temple Material: Acetate Lens Material: AC



C1  
镜框 (Frame): 亮黑 /Black  
镜腿 (Temple): 亮黑 /Black



C2  
镜框 (Frame): 透茶 /Transparent Tea  
镜腿 (Temple): 透茶 /Transparent Tea



C3  
镜框 (Frame): 玳瑁 /Tortoiseshell  
镜腿 (Temple): 玳瑁 /Tortoiseshell



C4  
镜框 (Frame): 香槟灰 /Champagne Gray  
镜腿 (Temple): 香槟灰 /Champagne Gray



# MODEL 2A913



50mm | 21mm | 140mm



镜框材质：板材 镜腿材质：钛合金 镜片材质：AC  
Frame Material: Acetate Temple Material: Titanium Alloy Lens Material: AC



C1  
镜框 (Frame): 亮黑 /Black  
镜腿 (Temple): 亮黑色 /Black



C3  
镜框 (Frame): 透灰框 /Transparent Grey  
镜腿 (Temple): 透灰色 /Transparent Grey



C4  
镜框 (Frame): 透明浅茶框 /Transparent Light Tea  
镜腿 (Temple): 透明浅茶色 /Transparent Light Tea



C5  
镜框 (Frame): 透明灰茶框 /Transparent Grey Tea  
镜腿 (Temple): 透灰色 /Transparent Grey



# MODEL 2A812



53mm | 16mm | 150mm



镜框材质：板材 镜腿材质：板材 镜片材质：AC  
Frame Material: Acetate Temple Material: Acetate Lens Material: AC



C1  
镜框 (Frame): 亮黑 /Black  
镜腿 (Temple): 亮黑 /Black



C2  
镜框 (Frame): 透茶 /Transparent Tea  
镜腿 (Temple): 透茶 /Transparent Tea



C3  
镜框 (Frame): 玳瑁 /Tortoiseshell  
镜腿 (Temple): 玳瑁 /Tortoiseshell



C4  
镜框 (Frame): 透灰 /Transparent Grey  
镜腿 (Temple): 透灰 /Transparent Grey



# MODEL 2A810



51mm | 16mm | 150mm



镜框材质：板材 镜腿材质：板材 镜片材质：AC  
Frame Material: Acetate Temple Material: Acetate Lens Material: AC



C1  
镜框 (Frame): 亮黑 / Black  
镜腿 (Temple): 亮黑 / Black



C2  
镜框 (Frame): 透茶 / Transparent Tea  
镜腿 (Temple): 透茶 / Transparent Tea



C3  
镜框 (Frame): 玳瑁 / Tortoiseshell  
镜腿 (Temple): 玳瑁 / Tortoiseshell



C4  
镜框 (Frame): 透灰 / Transparent Grey  
镜腿 (Temple): 透灰 / Transparent Grey



# MODEL 2A618



50mm | 17mm | 142mm



镜框材质：板材 镜腿材质：板材 镜片材质：AC  
Frame Material: Acetate Temple Material: Acetate Lens Material: AC



C1  
镜框 (Frame): 亮黑/Black  
镜腿 (Temple): 亮黑/Black



C2  
镜框 (Frame): 玳瑁/Tortoiseshell  
镜腿 (Temple): 玳瑁/Tortoiseshell



# MODEL 2A616



○ | ㄩ | 一  
46mm 22mm 149mm



镜框材质：板材 镜腿材质：板材 镜片材质：AC  
Frame Material: Acetate Temple Material: Acetate Lens Material: AC



C1  
镜框 (Frame): 亮黑 /Black  
镜腿 (Temple): 亮黑 /Black



C2  
镜框 (Frame): 透茶 /Transparent Tea  
镜腿 (Temple): 透茶 /Transparent Tea



C3  
镜框 (Frame): 玳瑁 /Tortoiseshell  
镜腿 (Temple): 玳瑁 /Tortoiseshell



C4  
镜框 (Frame): 透灰 /Transparent Grey  
镜腿 (Temple): 透灰 /Transparent Grey



# MODEL 2A615



51mm | 19mm | 144mm



镜框材质：板材 镜腿材质：板材 镜片材质：AC  
Frame Material: Acetate Temple Material: Acetate Lens Material: AC



C1  
镜框 (Frame): 亮黑 / Black  
镜腿 (Temple): 亮黑 / Black



C2  
镜框 (Frame): 透茶 / Transparent Tea  
镜腿 (Temple): 透茶 / Transparent Tea



C3  
镜框 (Frame): 玳瑁 / Tortoiseshell  
镜腿 (Temple): 玳瑁 / Tortoiseshell



C4  
镜框 (Frame): 透灰 / Transparent Grey  
镜腿 (Temple): 透灰 / Transparent Grey



# MODEL 2A610



54mm | 16mm | 145mm



镜框材质：板材 镜腿材质：板材 镜片材质：AC  
Frame Material: Acetate Temple Material: Acetate Lens Material: AC



C1

镜框 (Frame): 亮黑/Black  
镜腿 (Temple): 亮黑/Black



C3

镜框 (Frame): 玳瑁/Tortoiseshell  
镜腿 (Temple): 玳瑁/Tortoiseshell



# MODEL 2A519



51mm | 13mm | 138mm



镜框材质：板材 镜腿材质：板材 镜片材质：AC  
Frame Material: Acetate Temple Material: Acetate Lens Material: AC



C1  
镜框 (Frame): 亮黑 / Black  
镜腿 (Temple): 亮黑 / Black



C2  
镜框 (Frame): 玳瑁 / Tortoiseshell  
镜腿 (Temple): 玳瑁 / Tortoiseshell



C4  
镜框 (Frame): 透灰 / Transparent Grey  
镜腿 (Temple): 透灰 / Transparent Grey



# MODEL 2A518



49mm | 23mm | 148mm



镜框材质：板材 镜腿材质：板材 镜片材质：AC  
Frame Material: Acetate Temple Material: Acetate Lens Material: AC



C1  
镜框 (Frame): 亮黑/Black  
镜腿 (Temple): 亮黑/Black



C2  
镜框 (Frame): 玳瑁/Tortoiseshell  
镜腿 (Temple): 玳瑁/Tortoiseshell



C3  
镜框 (Frame): 透灰/Transparent Grey  
镜腿 (Temple): 透灰/Transparent Grey



C4  
镜框 (Frame): 透明/Transparent  
镜腿 (Temple): 玳瑁/Tortoiseshell



C5  
镜框 (Frame): 亮黑/Black  
镜腿 (Temple): 内透明黑/Clear Inner with Black



# MODEL 2A517



○ | ◡ | —  
52mm 17mm 142mm



镜框材质：板材 镜腿材质：板材 镜片材质：AC  
Frame Material: Acetate Temple Material: Acetate Lens Material: AC



C1  
镜框 (Frame): 亮黑 /Black  
镜腿 (Temple): 亮黑 /Black



C2  
镜框 (Frame): 透茶 /Transparent Tea  
镜腿 (Temple): 透茶 /Transparent Tea



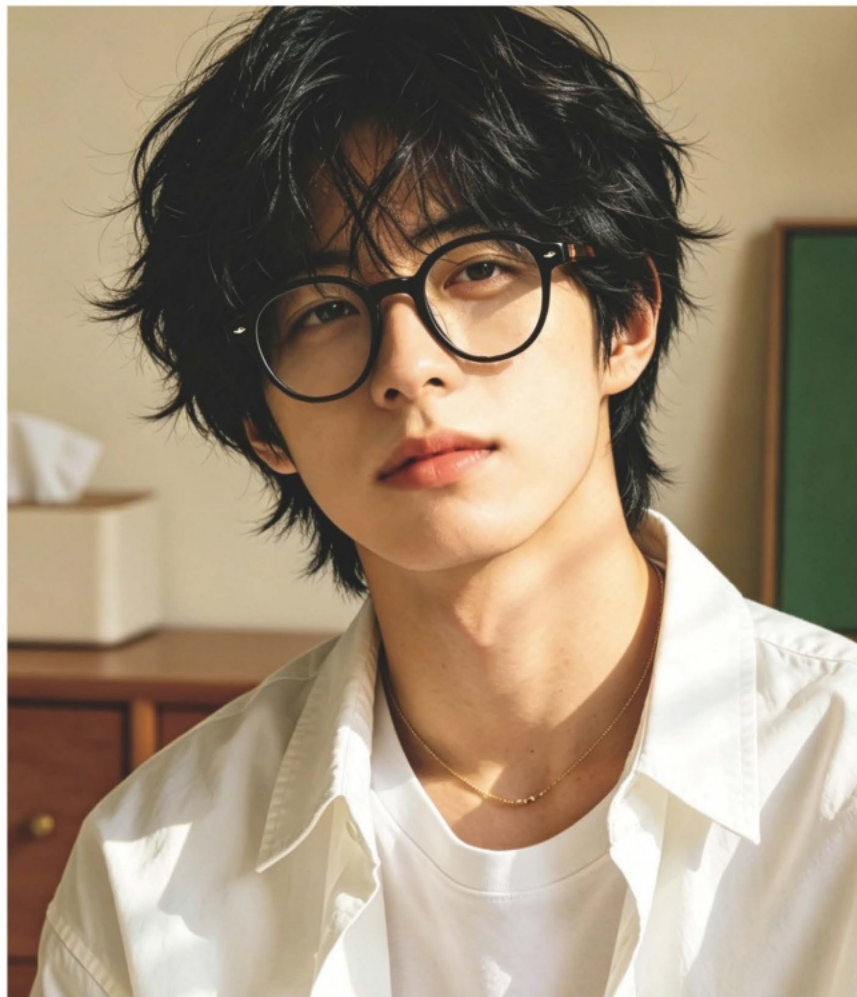
C3  
镜框 (Frame): 玳瑁 /Tortoiseshell  
镜腿 (Temple): 玳瑁 /Tortoiseshell



C4  
镜框 (Frame): 透明浅茶 /Transparent Light Tea  
镜腿 (Temple): 透明浅茶 /Transparent Light Tea



# MODEL 2A516



46mm | 23mm | 147mm



镜框材质：板材 镜腿材质：板材 镜片材质：AC  
Frame Material: Acetate Temple Material: Acetate Lens Material: AC



C1  
镜框 (Frame): 亮黑 / Black  
镜腿 (Temple): 亮黑 / Black



C2  
镜框 (Frame): 玳瑁 / Tortoiseshell  
镜腿 (Temple): 玳瑁 / Tortoiseshell



C3  
镜框 (Frame): 透灰 / Transparent Grey  
镜腿 (Temple): 透灰 / Transparent Grey



C4  
镜框 (Frame): 亮黑 / Black  
镜腿 (Temple): 玳瑁 / Tortoiseshell



C5  
镜框 (Frame): 透明 / Transparent  
镜腿 (Temple): 玳瑁 / Tortoiseshell



C6  
镜框 (Frame): 透茶 / Transparent Tea  
镜腿 (Temple): 透茶 / Transparent Tea



# MODEL 2A515



50mm | 17mm | 145mm



镜框材质：板材 镜腿材质：板材 镜片材质：AC  
Frame Material: Acetate Temple Material: Acetate Lens Material: AC



C1  
镜框 (Frame): 亮黑/Black  
镜腿 (Temple): 亮黑/Black



C3  
镜框 (Frame): 玳瑁/Tortoiseshell  
镜腿 (Temple): 玳瑁/Tortoiseshell



# MODEL 2A513



54mm | 17mm | 145mm



镜框材质：板材 镜腿材质：板材 镜片材质：AC  
Frame Material: Acetate Temple Material: Acetate Lens Material: AC



C1  
镜框 (Frame): 亮黑 / Black  
镜腿 (Temple): 亮黑 / Black



C2  
镜框 (Frame): 透茶 / Transparent Tea  
镜腿 (Temple): 透茶 / Transparent Tea



C3  
镜框 (Frame): 玳瑁 / Tortoiseshell  
镜腿 (Temple): 玳瑁 / Tortoiseshell



C4  
镜框 (Frame): 豆花 / Dove Grey  
镜腿 (Temple): 豆花 / Dove Grey



# MODEL 2A510



52mm | 18mm | 145mm



镜框材质：板材 镜腿材质：板材 镜片材质：AC  
Frame Material: Acetate Temple Material: Acetate Lens Material: AC



C1  
镜框 (Frame): 亮黑 /Black  
镜腿 (Temple): 亮黑 /Black



C2  
镜框 (Frame): 灰玳瑁 /Grey Tortoiseshell  
镜腿 (Temple): 灰玳瑁 /Grey Tortoiseshell



C3  
镜框 (Frame): 玳瑁 /Tortoiseshell  
镜腿 (Temple): 玳瑁 /Tortoiseshell



# MODEL 2A59



52mm | 18mm | 145mm



镜框材质：板材 镜腿材质：板材 镜片材质：AC  
Frame Material: Acetate Temple Material: Acetate Lens Material: AC



C1  
镜框 (Frame): 亮黑/Black  
镜腿 (Temple): 亮黑/Black



C2  
镜框 (Frame): 黑框/Black  
镜腿 (Temple): 玳瑁/Tortoiseshell



C3  
镜框 (Frame): 金框/Gold  
镜腿 (Temple): 玳瑁/Tortoiseshell



# MODEL 2A58



51mm | 19mm | 145mm



镜框材质：板材 镜腿材质：板材 镜片材质：AC  
Frame Material: Acetate Temple Material: Acetate Lens Material: AC



C1  
镜框 (Frame): 亮黑 /Black  
镜腿 (Temple): 亮黑 /Black



C2  
镜框 (Frame): 透茶 /Transparent Tea  
镜腿 (Temple): 透茶 /Transparent Tea



C3  
镜框 (Frame): 豆花 /Dove Grey  
镜腿 (Temple): 豆花 /Dove Grey



C4  
镜框 (Frame): 玳瑁 /Tortoiseshell  
镜腿 (Temple): 玳瑁 /Tortoiseshell



# MODEL 2A613



51mm 22mm 137mm



镜框材质：板材 镜腿材质：板材 镜片材质：AC  
Frame Material: Acetate Temple Material: Acetate Lens Material: AC



C1  
镜框 (Frame): 亮黑 / Black  
镜腿 (Temple): 亮黑 / Black



C2  
镜框 (Frame): 透茶 / Transparent Tea  
镜腿 (Temple): 透茶 / Transparent Tea



C3  
镜框 (Frame): 玳瑁 / Tortoiseshell  
镜腿 (Temple): 玳瑁 / Tortoiseshell



C4  
镜框 (Frame): 透灰 / Transparent Grey  
镜腿 (Temple): 透灰 / Transparent Grey



# MODEL 2A612



53mm | 18mm | 145mm



镜框材质：板材 镜腿材质：板材 镜片材质：AC  
Frame Material: Acetate Temple Material: Acetate Lens Material: AC



C1  
镜框 (Frame): 亮黑/Black  
镜腿 (Temple): 亮黑/Black



C3  
镜框 (Frame): 玳瑁/Tortoiseshell  
镜腿 (Temple): 玳瑁/Tortoiseshell



# MODEL 2A57



52mm | 17mm | 147mm



镜框材质：板材 镜腿材质：板材 镜片材质：AC  
Frame Material: Acetate Temple Material: Acetate Lens Material: AC



C1  
镜框 (Frame): 亮黑 / Black  
镜腿 (Temple): 亮黑色 / Black



C2  
镜框 (Frame): 透茶 / Transparent Tea  
镜腿 (Temple): 透茶色 / Transparent Tea



C3  
镜框 (Frame): 玳瑁 / Tortoiseshell  
镜腿 (Temple): 玳瑁色 / Tortoiseshell



# MODEL 2A52



○ | 〰 | 一  
49mm 22mm 145mm



镜框材质：板材 镜腿材质：钛 镜片材质：AC  
Frame Material: Acetate Temple Material: Titanium Lens Material: AC



C1  
镜框 (Frame): 亮黑/Black  
镜腿 (Temple): 银色/Silver



C2  
镜框 (Frame): 亮黑/Black  
镜腿 (Temple): 金色/Gold



C3  
镜框 (Frame): 透茶/Transparent Tea  
镜腿 (Temple): 金色/Gold



C4  
镜框 (Frame): 豆花/Speckled  
镜腿 (Temple): 银色/Silver



C5  
镜框 (Frame): 玳瑁/Tortoiseshell  
镜腿 (Temple): 金色/Gold



# MODEL 2A51



47mm | 20mm | 146mm



镜框材质：板材 镜腿材质：钛 镜片材质：AC  
Frame Material: Acetate Temple Material: Titanium Lens Material: AC



C1  
镜框 (Frame): 亮黑/Black  
镜腿 (Temple): 银色/Silver



C2  
镜框 (Frame): 亮黑/Black  
镜腿 (Temple): 金色/Gold



C3  
镜框 (Frame): 透茶/Transparent Tea  
镜腿 (Temple): 金色/Gold



C4  
镜框 (Frame): 玳瑁/Tortoiseshell  
镜腿 (Temple): 银色/Silver



C5  
镜框 (Frame): 玳瑁/Tortoiseshell  
镜腿 (Temple): 金色/Gold



# MODEL 2A285



53mm | 18mm | 145mm



镜框材质：板材 镜腿材质：板材 镜片材质：AC  
Frame Material: Acetate Temple Material: Acetate Lens Material: AC



C1  
镜框 (Frame): 亮黑 / Black  
镜腿 (Temple): 亮黑色 / Black



C2  
镜框 (Frame): 透茶 / Transparent Tea  
镜腿 (Temple): 透茶 / Transparent Tea



C3  
镜框 (Frame): 玳瑁 / Tortoiseshell  
镜腿 (Temple): 玳瑁 / Tortoiseshell



C4  
镜框 (Frame): 透红 / Transparent Red  
镜腿 (Temple): 透红 / Transparent Red



# MODEL 2A213



53mm | 19mm | 146mm



镜框材质：板材 镜腿材质：板材 镜片材质：AC  
Frame Material: Acetate Temple Material: Acetate Lens Material: AC



C1  
镜框 (Frame): 亮黑 / Black  
镜腿 (Temple): 亮黑 / Black



C2  
镜框 (Frame): 透茶 / Transparent Tea  
镜腿 (Temple): 透茶 / Transparent Tea



C3  
镜框 (Frame): 玳瑁 / Tortoiseshell  
镜腿 (Temple): 玳瑁 / Tortoiseshell



C4  
镜框 (Frame): 透红 / Transparent Red  
镜腿 (Temple): 透红 / Transparent Red



C5  
镜框 (Frame): 豆花 / Dove Grey  
镜腿 (Temple): 豆花 / Dove Grey



# MODEL BILLY



52mm | 21mm | 146mm



镜框材质：板材 镜腿材质：板材 镜片材质：AC  
Frame Material: Acetate Temple Material: Acetate Lens Material: AC



C3

镜框 (Frame): 亮黑 / Black  
镜腿 (Temple): 亮黑 / Black

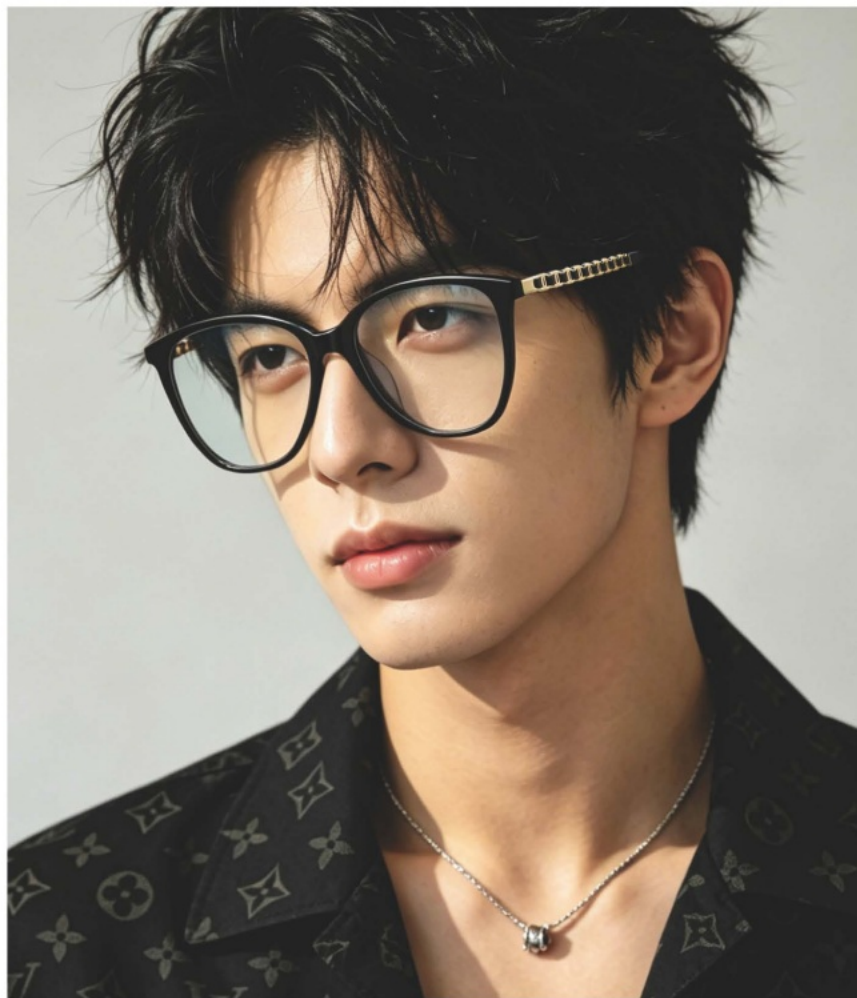


C4

镜框 (Frame): 透绿 / Transparent Green  
镜腿 (Temple): 透绿 / Transparent Green



# MODEL CH3408



51mm | 20mm | 145mm



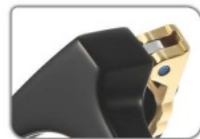
镜框材质：板材 镜腿材质：板材 镜片材质：AC  
Frame Material: Acetate Temple Material: Acetate Lens Material: AC



C1  
镜框 (Frame): 亮黑 / Black  
镜腿 (Temple): 亮黑 / Black



C2  
镜框 (Frame): 玳瑁 / Tortoiseshell  
镜腿 (Temple): 玳瑁 / Tortoiseshell



# MODEL DAYSDAY



53mm | 22mm | 147mm



镜框材质：板材 镜腿材质：板材 镜片材质：AC  
Frame Material: Acetate Temple Material: Acetate Lens Material: AC



C7

镜框 (Frame): 亮黑 / Black  
镜腿 (Temple): 亮黑 / Black



C8

镜框 (Frame): 透灰 / Transparent Grey  
镜腿 (Temple): 透灰 / Transparent Grey



# MODEL L282112



51mm | 21mm | 145mm



镜框材质：板材 镜腿材质：板材 镜片材质：AC  
Frame Material: Acetate Temple Material: Acetate Lens Material: AC



C1  
镜框 (Frame): 亮黑 / Black  
镜腿 (Temple): 亮黑 / Black



C2  
镜框 (Frame): 透茶 / Transparent Tea  
镜腿 (Temple): 透茶 / Transparent Tea



C3  
镜框 (Frame): 玳瑁 / Tortoiseshell  
镜腿 (Temple): 玳瑁 / Tortoiseshell



C4  
镜框 (Frame): 透红 / Transparent Red  
镜腿 (Temple): 透红 / Transparent Red



C5  
镜框 (Frame): 亮黑 / Black  
镜腿 (Temple): 亮黑 / Black



# MODEL MM09



47mm | 17mm | 147mm



镜框材质：板材 镜腿材质：板材 镜片材质：AC  
Frame Material: Acetate Temple Material: Acetate Lens Material: AC



C1  
镜框 (Frame): 亮黑 /Black  
镜腿 (Temple): 亮黑 /Black



C2  
镜框 (Frame): 透绿 /Transparent Green  
镜腿 (Temple): 透绿 /Transparent Green



C3  
镜框 (Frame): 透紫 /Transparent Purple  
镜腿 (Temple): 透紫 /Transparent Purple



# MODEL MM10



○ | ㄩ | 一  
49mm 19mm 144mm



镜框材质：板材 镜腿材质：板材 镜片材质：AC  
Frame Material: Acetate Temple Material: Acetate Lens Material: AC



C1  
镜框 (Frame): 亮黑 / Black  
镜腿 (Temple): 亮黑 / Black



C2  
镜框 (Frame): 透绿 / Transparent Green  
镜腿 (Temple): 透绿 / Transparent Green



C3  
镜框 (Frame): 透紫 / Transparent Purple  
镜腿 (Temple): 透紫 / Transparent Purple



C4  
镜框 (Frame): 透灰 / Transparent Grey  
镜腿 (Temple): 透灰 / Transparent Grey



# MODEL MM114



55mm | 18mm | 145mm



镜框材质：板材 镜腿材质：板材 镜片材质：AC  
Frame Material: Acetate Temple Material: Acetate Lens Material: AC



C1  
镜框 (Frame): 亮黑 / Black  
镜腿 (Temple): 亮黑 / Black



C2  
镜框 (Frame): 透茶 / Transparent Tea  
镜腿 (Temple): 透茶 / Transparent Tea



C3  
镜框 (Frame): 透明 / Transparent  
镜腿 (Temple): 透明黑 / Transparent Black



C4  
镜框 (Frame): 玳瑁 / Tortoiseshell  
镜腿 (Temple): 玳瑁 / Tortoiseshell



# MODEL MST2061B



45mm | 25mm | 145mm



镜框材质：板材 镜腿材质：板材 镜片材质：AC  
Frame Material: Acetate Temple Material: Acetate Lens Material: AC



C1  
镜框 (Frame): 亮黑/Black  
镜腿 (Temple): 亮黑/Black



C2  
镜框 (Frame): 透茶/Transparent Tea  
镜腿 (Temple): 透茶/Transparent Tea



C3  
镜框 (Frame): 茶豆花/Tea Taupe  
镜腿 (Temple): 茶豆花/Tea Taupe



C4  
镜框 (Frame): 豆花/Taupe  
镜腿 (Temple): 豆花/Taupe



C5  
镜框 (Frame): 透灰/Transparent Grey  
镜腿 (Temple): 透灰/Transparent Grey



# MODEL MST2062A



48mm | 20mm | 145mm



镜框材质：板材 镜腿材质：板材 镜片材质：AC  
Frame Material: Acetate Temple Material: Acetate Lens Material: AC



C1  
镜框 (Frame): 亮黑/Black  
镜腿 (Temple): 亮黑/Black



C2  
镜框 (Frame): 透茶/Transparent Tea  
镜腿 (Temple): 透茶/Transparent Tea



C3  
镜框 (Frame): 茶豆花/Tea Taupe  
镜腿 (Temple): 茶豆花/Tea Taupe



C4  
镜框 (Frame): 豆花/Taupe  
镜腿 (Temple): 豆花/Taupe



C5  
镜框 (Frame): 透灰/Transparent Grey  
镜腿 (Temple): 透灰/Transparent Grey



# MODEL OAA



55mm | 19mm | 146mm



镜框材质： 板材 镜腿材质： 板材 镜片材质： AC  
Frame Material: Acetate Temple Material: Acetate Lens Material: AC



C1  
镜框 (Frame): 亮黑/Black  
镜腿 (Temple): 亮黑/Black



C2  
镜框 (Frame): 香槟/Champagne  
镜腿 (Temple): 香槟/Champagne



C3  
镜框 (Frame): 透明/Transparent  
镜腿 (Temple): 透明/Transparent



# MODEL OJO



52mm | 21mm | 147mm



镜框材质：板材 镜腿材质：板材 镜片材质：AC  
Frame Material: Acetate Temple Material: Acetate Lens Material: AC



C1

镜框 (Frame): 亮黑 / Black  
镜腿 (Temple): 亮黑 / Black

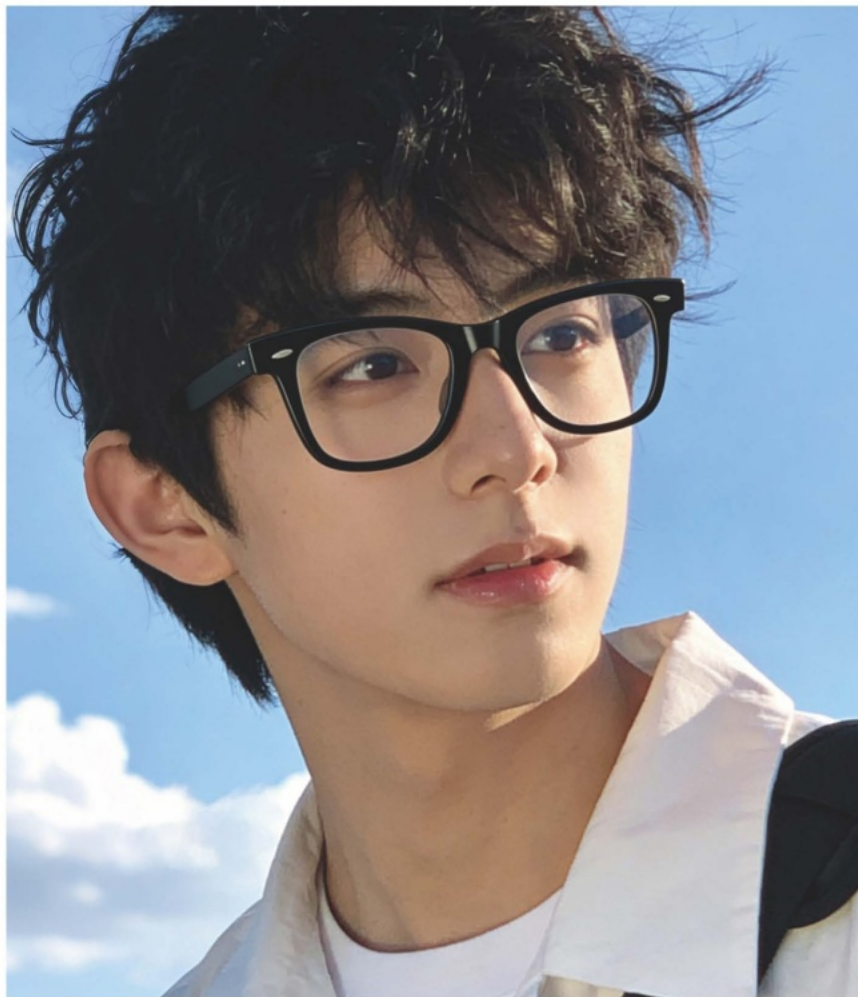


C2

镜框 (Frame): 透灰 / Transparent Grey  
镜腿 (Temple): 透灰 / Transparent Grey



# MODEL RB



48mm | 18mm | 140mm



镜框材质： 板材 镜腿材质： 板材 镜片材质： AC  
Frame Material: Acetate Temple Material: Acetate Lens Material: AC



C1

镜框 (Frame): 亮黑 / Black  
镜腿 (Temple): 亮黑 / Black

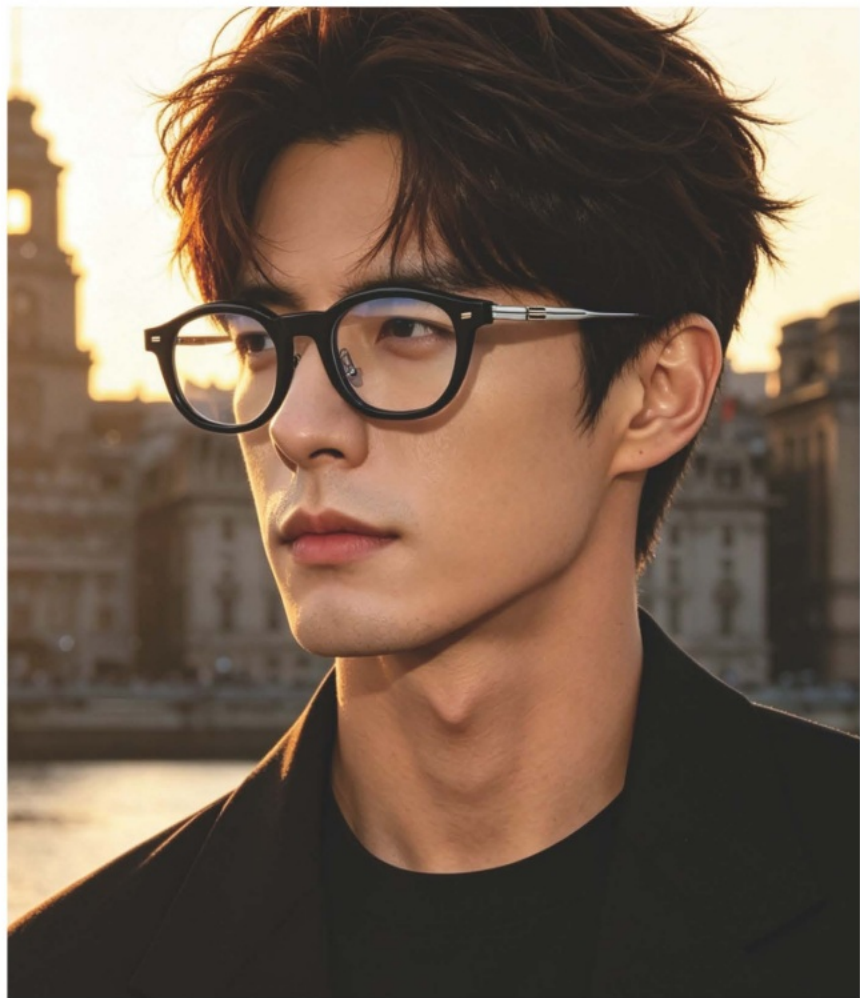


C2

镜框 (Frame): 玳瑁 / Tortoiseshell  
镜腿 (Temple): 玳瑁 / Tortoiseshell



# MODEL ROB



51mm | 24mm | 147mm



镜框材质：板材 镜腿材质：钛 镜片材质：AC  
Frame Material: Acetate Temple Material: Titanium Lens Material: AC



C1

镜框 (Frame): 亮黑 / Black  
镜腿 (Temple): 银色 / Silver



C2

镜框 (Frame): 透绿 / Transparent Green  
镜腿 (Temple): 银色 / Silver



# MODEL SYLK



51mm | 19mm | 145mm



镜框材质：板材 镜腿材质：板材 镜片材质：AC  
Frame Material: Acetate Temple Material: Acetate Lens Material: AC



C1  
镜框 (Frame): 亮黑 /Black  
镜腿 (Temple): 亮黑 /Black



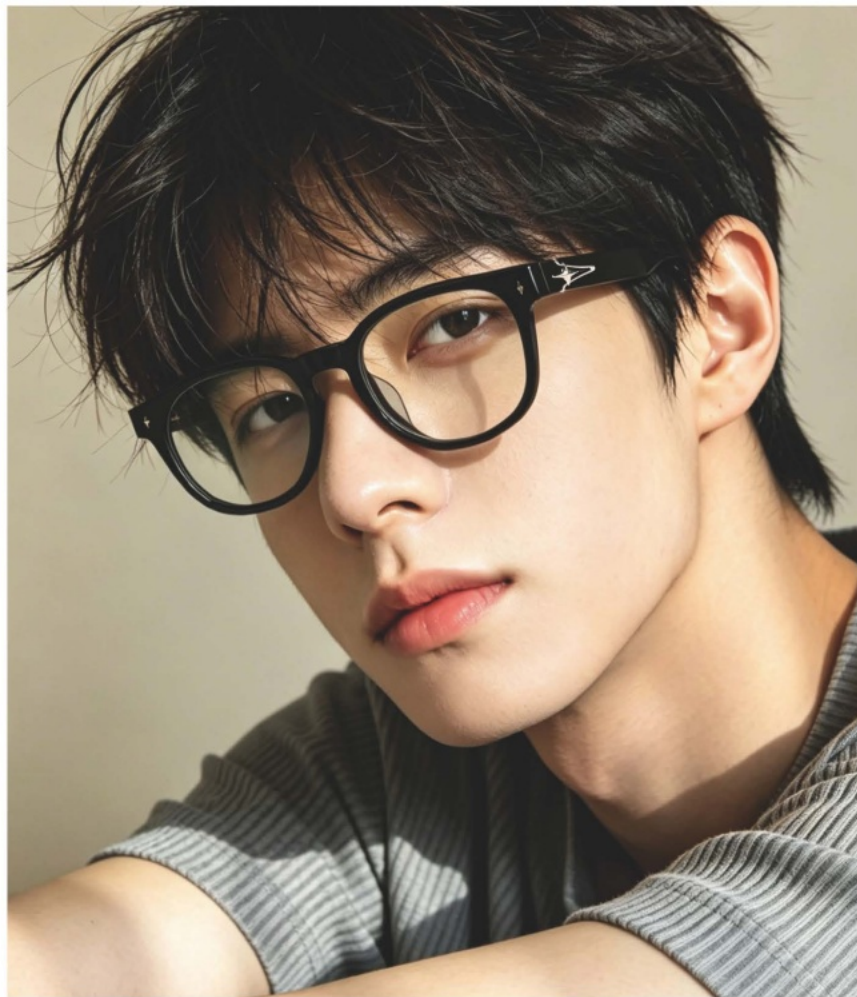
C2  
镜框 (Frame): 透红框 /Transparent Red  
镜腿 (Temple): 透红色 /Transparent Red



C3  
镜框 (Frame): 透绿框 /Transparent Green  
镜腿 (Temple): 透绿框 /Transparent Green



# MODEL VONZO



45mm | 23mm | 147mm



镜框材质：板材 镜腿材质：板材 镜片材质：AC  
Frame Material: Acetate Temple Material: Acetate Lens Material: AC



C1  
镜框 (Frame): 亮黑 / Black  
镜腿 (Temple): 亮黑 / Black



C2  
镜框 (Frame): 透灰 / Transparent Grey  
镜腿 (Temple): 透灰 / Transparent Grey



# MODEL Z2212U



49mm | 24mm | 149mm



镜框材质：板材 镜腿材质：板材 镜片材质：AC  
Frame Material: Acetate Temple Material: Acetate Lens Material: AC



C1  
镜框 (Frame): 亮黑/Black  
镜腿 (Temple): 亮黑/Black



C2  
镜框 (Frame): 豆花/Taupe  
镜腿 (Temple): 豆花/Taupe



C3  
镜框 (Frame): 透灰/Transparent Grey  
镜腿 (Temple): 透灰/Transparent Grey



C4  
镜框 (Frame): 透黄/Transparent Yellow  
镜腿 (Temple): 豆花/Taupe



C5  
镜框 (Frame): 透茶/Transparent Tea  
镜腿 (Temple): 透茶/Transparent Tea



C6  
镜框 (Frame): 透蓝/Transparent Blue  
镜腿 (Temple): 透蓝/Transparent Blue



C7  
镜框 (Frame): 玳瑁/Tortoiseshell  
镜腿 (Temple): 玳瑁/Tortoiseshell



# MODEL Z2213U



○ | 〰 | 一  
48mm 25mm 148mm



镜框材质：板材 镜腿材质：板材 镜片材质：AC  
Frame Material: Acetate Temple Material: Acetate Lens Material: AC



C1  
镜框 (Frame): 亮黑/Black  
镜腿 (Temple): 亮黑/Black



C2  
镜框 (Frame): 玳瑁/Tortoiseshell  
镜腿 (Temple): 玳瑁/Tortoiseshell



C3  
镜框 (Frame): 透灰/Transparent Grey  
镜腿 (Temple): 透灰/Transparent Grey



C4  
镜框 (Frame): 透黄/Transparent Yellow  
镜腿 (Temple): 玳瑁/Tortoiseshell



C5  
镜框 (Frame): 透黄/Transparent Yellow  
镜腿 (Temple): 透茶/Transparent Tea



C6  
镜框 (Frame): 透蓝/Transparent Blue  
镜腿 (Temple): 透蓝/Transparent Blue



C7  
镜框 (Frame): 透绿/Transparent Green  
镜腿 (Temple): 透绿/Transparent Green



C8  
镜框 (Frame): 亮红/Red  
镜腿 (Temple): 亮红/Red



# MODEL ZIN



51mm | 24mm | 147mm



镜框材质：板材 镜腿材质：钛 镜片材质：AC  
Frame Material: Acetate Temple Material: Titanium Lens Material: AC



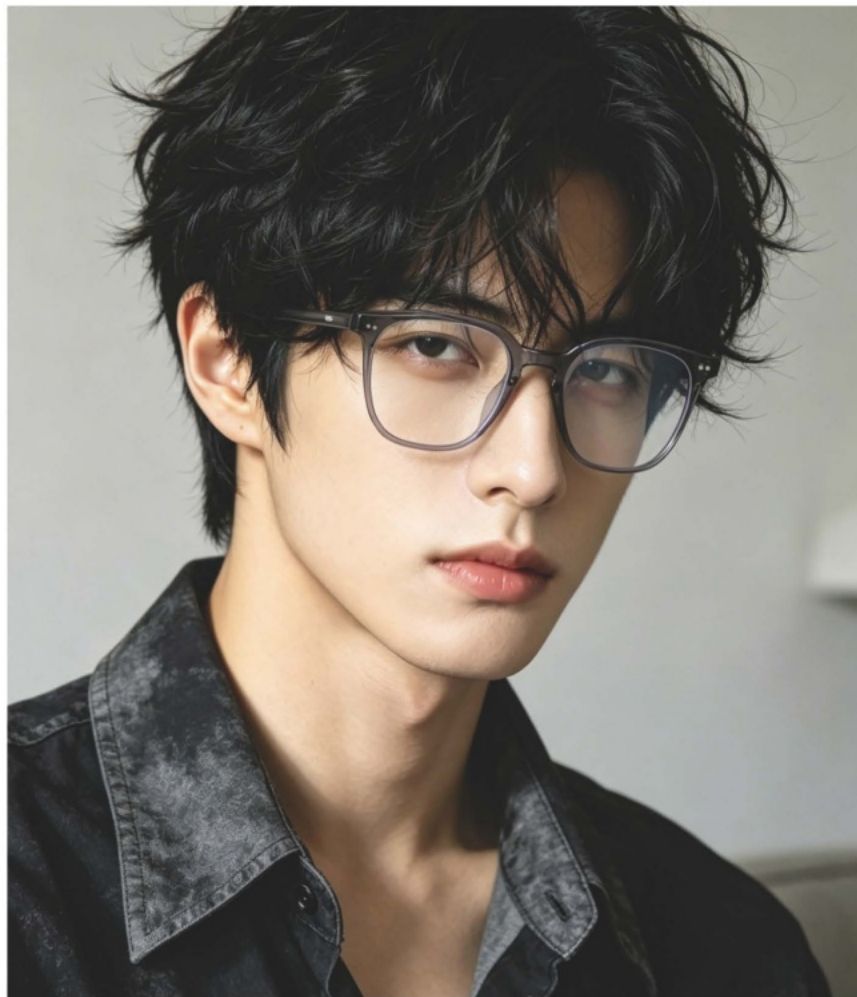
C1  
镜框 (Frame): 亮黑 / Black  
镜腿 (Temple): 银色 / Silver



C2  
镜框 (Frame): 透灰 / Transparent Grey  
镜腿 (Temple): 银色 / Silver



# MODEL 6019



47mm | 16mm | 146mm



镜框材质：板材 镜腿材质：板材 镜片材质：AC  
Frame Material: Acetate Temple Material: Acetate Lens Material: AC



C1

镜框 (Frame): 亮黑/Black  
镜腿 (Temple): 亮黑/Black



C2

镜框 (Frame): 透灰/Transparent Grey  
镜腿 (Temple): 透灰/Transparent Grey



# MODEL 6016



49mm | 23mm | 139mm



镜框材质：板材 镜腿材质：板材 镜片材质：AC/尼龙  
Frame Material: Acetate Temple Material: Acetate Lens Material: AC/Nylon



C1  
镜框 (Frame): 亮黑/Black  
镜腿 (Temple): 亮黑/Black



C2  
镜框 (Frame): 透灰/Transparent Grey  
镜腿 (Temple): 透灰/Transparent Grey



C3  
镜框 (Frame): 玳瑁/Tortoiseshell  
镜腿 (Temple): 玳瑁/Tortoiseshell



C4  
镜框 (Frame): 透明/Transparent  
镜腿 (Temple): 透明/Transparent



C5  
镜框 (Frame): 亮黑/Black  
镜腿 (Temple): 亮黑/Black



# MODEL 2076



49mm | 19mm | 139mm



镜框材质：板材 镜腿材质：板材 镜片材质：AC  
Frame Material: Acetate Temple Material: Acetate Lens Material: AC



C1  
镜框 (Frame): 亮黑/Black  
镜腿 (Temple): 亮黑/Black



C2  
镜框 (Frame): 亮黑/Black  
镜腿 (Temple): 玳瑁/Tortoiseshell



# MODEL 8046



53mm | 21mm | 146mm



镜框材质：板材 镜腿材质：板材 镜片材质：AC  
Frame Material: Acetate Temple Material: Acetate Lens Material: AC



C1  
镜框 (Frame): 亮黑 / Black  
镜腿 (Temple): 亮黑 / Black



C2  
镜框 (Frame): 玳瑁 / Tortoiseshell  
镜腿 (Temple): 玳瑁 / Tortoiseshell



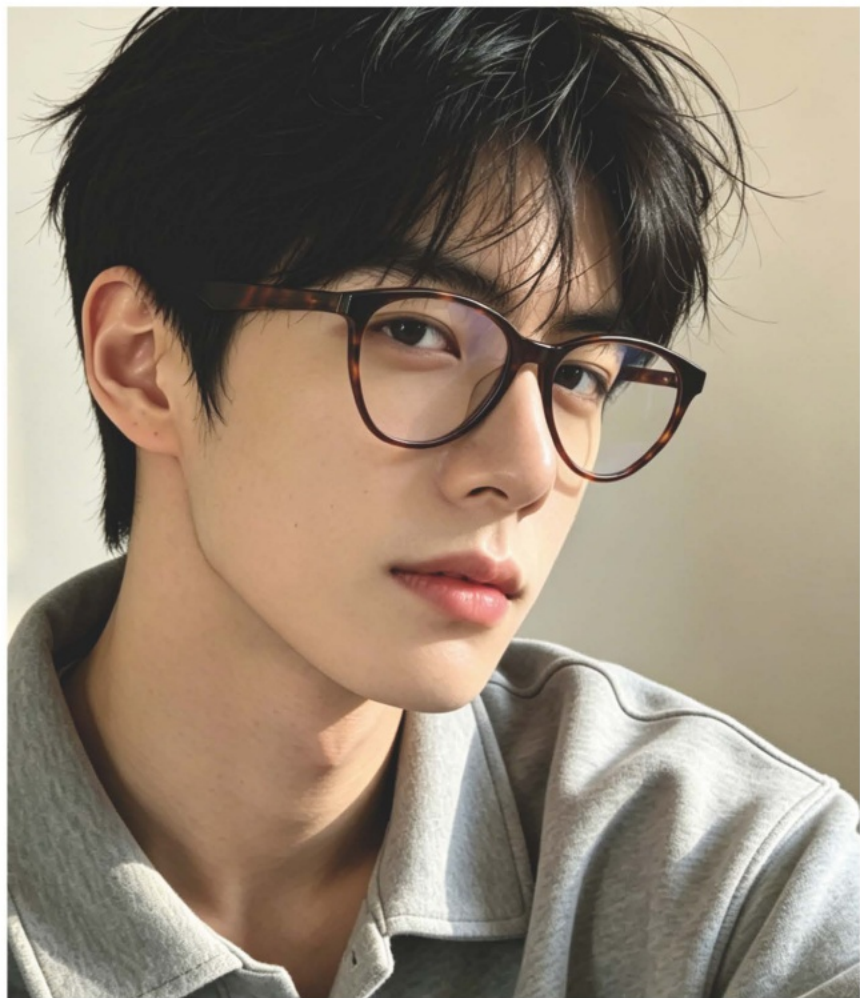
C3  
镜框 (Frame): 米白 / Cream White  
镜腿 (Temple): 亮黑 / Black



C4  
镜框 (Frame): 透红 / Transparent Red  
镜腿 (Temple): 透红 / Transparent Red



# MODEL 9078



53mm | 17mm | 148mm



镜框材质：板材 镜腿材质：板材 镜片材质：AC  
Frame Material: Acetate Temple Material: Acetate Lens Material: AC



C1  
镜框 (Frame): 亮黑 / Black  
镜腿 (Temple): 亮黑 / Black



C2  
镜框 (Frame): 透茶 / Transparent Tea  
镜腿 (Temple): 透茶 / Transparent Tea



C3  
镜框 (Frame): 玳瑁 / Tortoiseshell  
镜腿 (Temple): 玳瑁 / Tortoiseshell



C4  
镜框 (Frame): 透明香槟 / Transparent Champagne  
镜腿 (Temple): 透明香槟 / Transparent Champagne



# MODEL 9076



54mm 18mm 143mm



镜框材质：板材 镜腿材质：板材 镜片材质：AC  
Frame Material: Acetate Temple Material: Acetate Lens Material: AC



C1  
镜框 (Frame): 亮黑 / Black  
镜腿 (Temple): 亮黑 / Black



C2  
镜框 (Frame): 玳瑁 / Tortoiseshell  
镜腿 (Temple): 玳瑁 / Tortoiseshell



C3  
镜框 (Frame): 透灰 / Transparent Grey  
镜腿 (Temple): 透灰 / Transparent Grey



# MODEL 2516



44mm | 14mm | 150mm



镜框材质：板材 镜腿材质：板材 镜片材质：AC  
Frame Material: Acetate Temple Material: Acetate Lens Material: AC



C5  
镜框 (Frame): 亮黑/Black  
镜腿 (Temple): 亮黑/Black



C6  
镜框 (Frame): 透绿/Transparent Green  
镜腿 (Temple): 透绿/Transparent Green



C7  
镜框 (Frame): 透灰/Transparent Grey  
镜腿 (Temple): 透灰/Transparent Grey



C8  
镜框 (Frame): 玳瑁/Tortoiseshell  
镜腿 (Temple): 玳瑁/Tortoiseshell



# MODEL NN-107



49mm | 20mm | 144mm



镜框材质：板材 镜腿材质：板材 镜片材质：AC  
Frame Material: Acetate Temple Material: Acetate Lens Material: AC



C3

镜框 (Frame): 亮黑 / Black  
镜腿 (Temple): 亮黑 / Black



C4

镜框 (Frame): 透灰 / Transparent Grey  
镜腿 (Temple): 透灰 / Transparent Grey



# MODEL NN029



48mm | 21mm | 148mm



镜框材质：板材 镜腿材质：板材 镜片材质：AC  
Frame Material: Acetate Temple Material: Acetate Lens Material: AC



C1

镜框 (Frame): 亮黑/Black  
镜腿 (Temple): 亮黑/Black



C2

镜框 (Frame): 玳瑁/Tortoiseshell  
镜腿 (Temple): 玳瑁/Tortoiseshell



# MODEL LP6018



54mm | 20mm | 148mm



镜框材质：板材 镜腿材质：板材 镜片材质：AC  
Frame Material: Acetate Temple Material: Acetate Lens Material: AC



C1

镜框 (Frame): 亮黑 / Black  
镜腿 (Temple): 亮黑 / Black



C2

镜框 (Frame): 透灰 / Transparent Grey  
镜腿 (Temple): 透灰 / Transparent Grey



# MODEL AT



52mm | 22mm | 148mm



镜框材质：板材 镜腿材质：板材 镜片材质：AC  
Frame Material: Acetate Temple Material: Acetate Lens Material: AC



C1  
镜框 (Frame): 亮黑 / Black  
镜腿 (Temple): 亮黑 / Black



C2  
镜框 (Frame): 透灰 / Transparent Grey  
镜腿 (Temple): 透灰 / Transparent Grey



C3  
镜框 (Frame): 透茶 / Transparent Tea  
镜腿 (Temple): 透茶 / Transparent Tea



C4  
镜框 (Frame): 透绿 / Transparent Green  
镜腿 (Temple): 透绿 / Transparent Green



# MODEL 8210



48mm | 20mm | 144mm



镜框材质：板材 镜腿材质：板材 镜片材质：AC  
Frame Material: Acetate Temple Material: Acetate Lens Material: AC



C3  
镜框 (Frame): 透明 /Transparent  
镜腿 (Temple): 渐黑 /Gradient Black



C4  
镜框 (Frame): 透灰 /Transparent Grey  
镜腿 (Temple): 透灰 /Transparent Grey



C5  
镜框 (Frame): 玳瑁 /Tortoiseshell  
镜腿 (Temple): 玳瑁 /Tortoiseshell



C6  
镜框 (Frame): 亮黑 /Black  
镜腿 (Temple): 亮黑 /Black



# MODEL 2529



45mm | 21mm | 148mm



镜框材质：板材 镜腿材质：板材 镜片材质：AC  
Frame Material: Acetate Temple Material: Acetate Lens Material: AC



C1  
镜框 (Frame): 亮黑 /Black  
镜腿 (Temple): 亮黑色 /Black



C2  
镜框 (Frame): 玳瑁 /Tortoiseshell  
镜腿 (Temple): 玳瑁色 /Tortoiseshell



C3  
镜框 (Frame): 透灰 /Transparent Grey  
镜腿 (Temple): 透灰色 /Transparent Grey



# MODEL 2528



56mm | 19mm | 148mm



镜框材质：板材 镜腿材质：合金 镜片材质：AC  
Frame Material: Acetate Temple Material: Alloy Lens Material: AC



C1  
镜框 (Frame): 亮黑/Black  
镜腿 (Temple): 银色/Silver



C2  
镜框 (Frame): 玳瑁/Tortoiseshell  
镜腿 (Temple): 银色/Silver



C3  
镜框 (Frame): 透茶框/Transparent Tea  
镜腿 (Temple): 金色/Gold



# MODEL 8060



53mm | 20mm | 150mm



镜框材质：板材 镜腿材质：板材 镜片材质：AC  
Frame Material: Acetate Temple Material: Acetate Lens Material: AC



C3  
镜框 (Frame): 亮黑/Black  
镜腿 (Temple): 亮黑/Black



C4  
镜框 (Frame): 豆花/Speckled  
镜腿 (Temple): 豆花/Speckled



# MODEL 2408



49mm | 19mm | 145mm



镜框材质：板材 镜腿材质：板材 镜片材质：AC  
Frame Material: Acetate Temple Material: Acetate Lens Material: AC



C4  
镜框 (Frame): 亮黑 /Black  
镜腿 (Temple): 亮黑色 /Black



C5  
镜框 (Frame): 玳瑁框 /Tortoiseshell  
镜腿 (Temple): 玳瑁色 /Tortoiseshell



C6  
镜框 (Frame): 透茶框 /Transparent Tea  
镜腿 (Temple): 透茶色 /Transparent Tea



# MODEL 2409



51mm | 18mm | 140mm



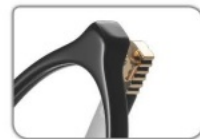
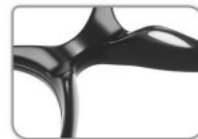
镜框材质：板材 镜腿材质：板材 镜片材质：AC  
Frame Material: Acetate Temple Material: Acetate Lens Material: AC



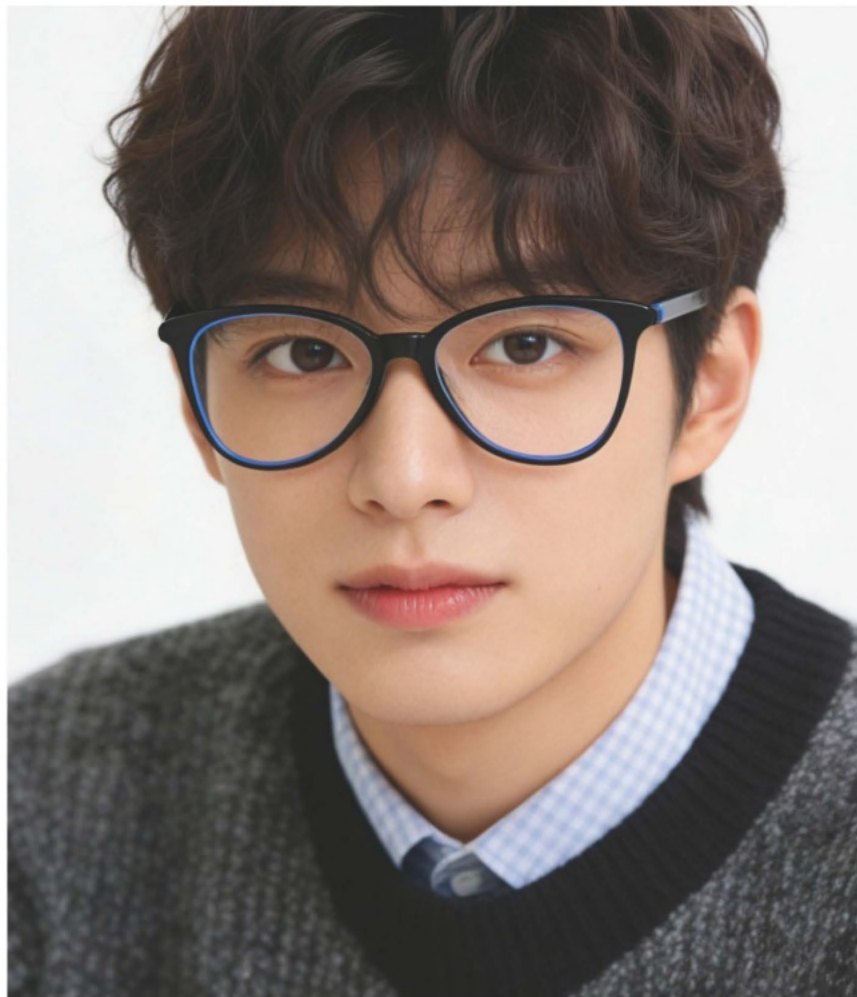
C1  
镜框 (Frame): 亮黑/Black  
镜腿 (Temple): 亮黑/Black



C2  
镜框 (Frame): 玳瑁/Tortoiseshell  
镜腿 (Temple): 玳瑁/Tortoiseshell



# MODEL 3282



54mm | 18mm | 135mm



镜框材质：板材 镜腿材质：板材 镜片材质：AC  
Frame Material: Acetate Temple Material: Acetate Lens Material: AC



C1

镜框 (Frame): 亮黑 / Black  
镜腿 (Temple): 亮黑 / Black



C2

镜框 (Frame): 玳瑁 / Tortoise Shell  
镜腿 (Temple): 玳瑁 / Tortoiseshell



# MODEL 9072



44mm | 20mm | 138mm



镜框材质：板材 镜腿材质：板材 镜片材质：AC  
Frame Material: Acetate Temple Material: Acetate Lens Material: AC



C1

镜框 (Frame): 亮黑 / Black  
镜腿 (Temple): 亮黑 / Black



C2

镜框 (Frame): 玳瑁 / Tortoiseshell  
镜腿 (Temple): 玳瑁 / Tortoiseshell



# MODEL LP9075



51mm | 18mm | 145mm



镜框材质：板材 镜腿材质：板材 镜片材质：AC  
Frame Material: Acetate Temple Material: Acetate Lens Material: AC



C1

镜框 (Frame): 亮黑 / Black  
镜腿 (Temple): 亮黑 / Black



C2

镜框 (Frame): 透茶 / Transparent Tea  
镜腿 (Temple): 透茶 / Transparent Tea



# MODEL 6021



52mm | 18mm | 148mm



镜框材质：板材 镜腿材质：板材 镜片材质：AC  
Frame Material: Acetate Temple Material: Acetate Lens Material: AC



C1

镜框 (Frame): 亮黑 / Black  
镜腿 (Temple): 亮黑 / Black



C2

镜框 (Frame): 透茶 / Transparent Tea  
镜腿 (Temple): 透茶 / Transparent Tea

